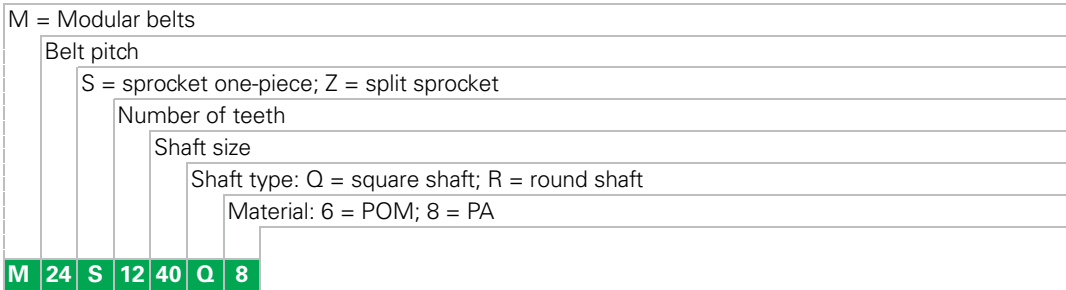


HabasitLINK®

Sprocket series M2400



Sprocket availability

Type	Number of teeth	Diam. of pitch $\varnothing d_p$		A_1		Hub width B_L		Square bore Q		Ø Round bore R		Standard material
		mm	inch	mm	inch	mm	inch	mm	inch	mm	inch	
S	12	99.5	3.9	46.5	1.83	25	0.98	40		30	1	PA
S	15	123.9	4.9	58.9	2.32	25	0.98	60				PA
S	18	148.3	5.8	71.3	2.81	25	0.98	40 / 60	2.5			PA
S-C1	12	99.5	3.9	46.5	1.83	25	0.98			40	1.5	PA
S-C1	18	148.3	5.8	71.3	2.81	25	0.98			40 / 50	1 / 1.5	PA
S-C1	20	164.6	6.5	79.6	3.13	25	0.98			40 / 50	1.5	PA
Z-H	18	148.3	5.8	71.3	2.81	51	2.00	40 / 60	1.5 / 2.5	40 / 50	1 / 1 ⁷ / ₁₆	PA+GS
Z-H	21	172.8	6.8	83.7	3.30	51	2.00	40 / 60	1.5 / 2.5	50	1 / 1 ⁷ / ₁₆	PA+GS

S: molded sprockets; S-C1: machined sprockets; Z-H: Multi-Hub sprockets. Other sprocket and hub sizes on request.

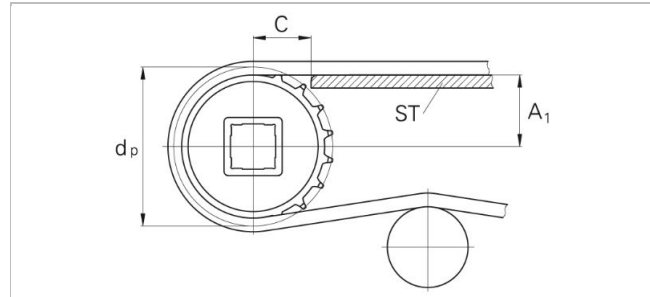
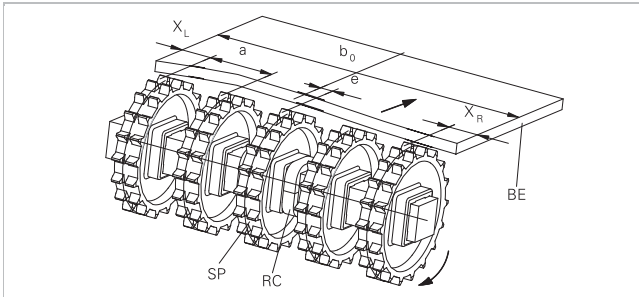
Key ways for round bore shape follow European standards for metric sizes and US standards for imperial sizes. For detailed dimensions see table in the Engineering Guide chapter Design Guide.

Other materials available on request.



Sprocket one-piece (solid)

Sprocket arrangement



BE Belt
RC Retainer
SP Sprocket
b₀ belt width
Wearstrips

The distance **C** between the sprocket axis and the slider support **ST** is minimal 28 mm (1.1").

Between driving shaft and idling sprockets or rollers the belt is carried by a slider support furnished with longitudinal wear strips (SL) from UHMW Polyethylene or other suitable material.

Sprocket positioning

For correct positioning of the center sprocket divide the belt width by the link increment. The rounded result will be an even or an odd number. These numbers are the criteria for offset or no offset, see table.

Belt type	Sprocket spacing a		Sprocket edge distance (minimal)		Criteria for center sprocket position	Result of formula (rounded)	Offset e	Remarks
	minimal mm inch	maximal mm inch	X_L mm inch	X_R mm inch				
M2420	51 2	170 6.7	42.5 1.67	42.5 1.67	$b_0 / 17$ $b_0 / 0.67$	even number (2, 4, 6 ...)	8.5 0.33	right or left side
						odd number (3, 5, 7 ...)	0 0	no offset
M2470 M2480	45.7 1.8	152.4 6	23 0.9	23 0.9	$b_0 / 15.24$ $b_0 / 0.6$	even number (2, 4, 6 ...)	7.6 0.29	right or left side
						odd number (3, 5, 7 ...)	0 0	no offset
M2483*	50.8 2	127 5	25.4 1	25.4 1	$b_0 / 25.4$ $b_0 / 1$	even number (2, 4, 6 ...)	0 0	no offset
						odd number (3, 5, 7 ...)	12.7 0.5	right or left side

* Avoid sprocket placement at moldule ends.

Numbers of sprockets and wearstrips for M2420

Standard belt width (nominal)		Number of sprockets per shaft	Number of wearstrips	
mm	<i>inch</i>	min. number	Carryway (top)	Returnway (bottom)
85	3.3	1	2	2
170	6.7	2	2	2
255	10.0	2	3	2
340	13.4	2	3	2
425	16.7	3	4	3
510	20.1	3	4	3
595	23.4	4	5	3
680	26.8	4	5	3
765	30.1	5	6	4
850	33.5	5	6	4
935	36.8	6	7	4
1'020	40.2	6	7	4
1'105	43.5	7	8	5
1'190	46.9	7	8	5
1'275	50.2	8	9	5
1'360	53.5	8	9	5
1'445	56.9	9	10	6
1'530	60.2	9	10	6
1'615	63.6	10	11	6
1'700	66.9	10	11	6
1'785	70.3	11	12	7
1'870	73.6	11	12	7
1'955	77.0	12	13	7
2'040	80.3	12	13	7

The number of sprockets depends on the belt load and may be different for driving and idling shafts. For calculation of correct sprocket number please use LINK-SeleCalc.

Numbers of sprockets and wearstrips for M2470, M2480

Standard belt width (nominal)		Number of sprockets per shaft	Number of wearstrips	
mm	<i>inch</i>	min. number	Carryway (top)	Returnway (bottom)
76	3.0	1	2	2
152	6.0	2	3	2
229	9.0	2	3	2
305	12.0	2	4	2
381	15.0	3	4	3
457	18.0	3	5	3
533	21.0	3	5	3
610	24.0	3	6	3
686	27.0	5	6	4
762	30.0	5	7	4
838	33.0	5	7	4
914	36.0	5	8	4
991	39.0	7	8	5
1'067	42.0	7	9	5
1'143	45.0	7	9	5
1'219	48.0	7	10	5
1'295	51.0	9	10	6
1'372	54.0	9	11	6
1'448	57.0	9	11	6
1'524	60.0	9	12	6
1'600	63.0	11	12	7
1'676	66.0	11	13	7
1'753	69.0	11	13	7
1'829	72.0	11	14	7
1'905	75.0	13	14	8
1'981	78.0	13	15	8
2'057	81.0	13	15	8

The number of sprockets depends on the belt load and may be different for driving and idling shafts. For calculation of correct sprocket number please use LINK-SeleCalc.

Numbers of sprockets and wearstrips for M2483

Standard belt width (nominal)		Number of sprockets per shaft	Number of wearstrips	
mm	<i>inch</i>	min. number	Carryway* (top)	Returnway (bottom)
76	3.0	2	2	2
152	6.0	2	3	2
229	9.0	3	3	2
305	12.0	3	4	2
381	15.0	5	4	3
457	18.0	5	5	3
533	21.0	5	5	3
610	24.0	7	6	3
686	27.0	7	6	4
762	30.0	7	7	4
838	33.0	9	7	4

HabasitLINK®

Sprocket series M2400



914	36.0	9	8	4
991	39.0	9	8	5
1'067	42.0	9	9	5
1'143	45.0	11	9	5
1'219	48.0	11	10	5
1'295	51.0	11	10	6
1'372	54.0	13	11	6
1'448	57.0	13	11	6
1'524	60.0	13	12	6
1'600	63.0	15	12	7
1'676	66.0	15	13	7
1'753	69.0	15	13	7
1'829	72.0	15	14	7
1'905	75.0	17	14	8
1'981	78.0	17	15	8
2'057	81.0	17	15	8

The number of sprockets depends on the belt load and may be different for driving and idling shafts. For calculation of correct sprocket number please use LINK-SeleCalc.

* It is possible to use a solid support plate instead of wear strips at carry way side, consult design guide for M2483.

Numbers of sprockets and wearstrips for M2420 ActivXchange 1"

Standard belt width (nominal)		Number of sprockets per shaft		Number of wearstrips	
mm	inch	Drive shaft (loaded shaft)	Idling shaft (unloaded shaft)	Carryway (top)	Returnway (bottom)
109.8	4.3	1	1	2	2

Numbers of sprockets and wearstrips for M2470 ActivXchange 1"

Standard belt width (nominal)		Number of sprockets per shaft		Number of wearstrips	
mm	inch	Drive shaft (loaded shaft)	Idling shaft (unloaded shaft)	Carryway (top)	Returnway (bottom)
152.2	6.0	2	1	2	2

Numbers of sprockets and wearstrips for M2480 ActivXchange 1"

Standard belt width (nominal)		Number of sprockets per shaft		Number of wearstrips	
mm	inch	Drive shaft (loaded shaft)	Idling shaft (unloaded shaft)	Carryway (top)	Returnway (bottom)
152.2	6.0	2	1	2	2

Numbers of sprockets and wearstrips for M2470 Flat Top 1" MTW

Standard belt width (nominal)		Number of sprockets per shaft		Number of wearstrips	
mm	<i>inch</i>	Drive shaft (loaded shaft)	Idling shaft (unloaded shaft)	Carryway (top)	Returnway (bottom)
82.6	3.25	1	1	2	2
114.3	4.5	1	1	2	2
152.2	6.0	3	2	2	2
190.5	7.5	3	2	2	2

The number of sprockets depends on the belt load and may be different for driving and idling shafts.
For calculation of correct sprocket number please use LINK-SeleCalc.

Disclaimer

Product Application Disclaimer (valid for ALL Habasit products and mentioned on all PDS)

This disclaimer is made by and on behalf of Habasit and its affiliated companies, directors, employees, agents and contractors (hereinafter collectively "HABASIT") with respect to the products referred to herein (the "Products"). SAFETY WARNINGS SHOULD BE READ CAREFULLY AND ANY RECOMMENDED SAFETY PRECAUTIONS BE FOLLOWED STRICTLY! Please refer to the Safety Warnings herein, in the Habasit catalogue as well as installation and operating manuals. All indications / information as to the application, use and performance of the Products are recommendations provided with due diligence and care, but no representations or warranties of any kind are made as to their completeness, accuracy or suitability for a particular purpose. The data provided herein are based on laboratory application with small-scale test equipment, running at standard conditions, and do not necessarily match product performance in industrial use. New knowledge and experience may lead to re-assessments and modifications within a short period of time and without prior notice.

EXCEPT AS EXPLICITLY WARRANTED BY HABASIT, WHICH WARRANTIES ARE EXCLUSIVE AND IN LIEU OF ALL OTHER WARRANTIES, EXPRESS OR IMPLIED, THE PRODUCTS ARE PROVIDED "AS IS". HABASIT DISCLAIMS ALL OTHER WARRANTIES, EITHER EXPRESS OR IMPLIED, INCLUDING, BUT NOT LIMITED TO, IMPLIED WARRANTIES OF MERCHANTABILITY, FITNESS FOR A PARTICULAR PURPOSE, NON-INFRINGEMENT, OR ARISING FROM A COURSE OF DEALING, USAGE, OR TRADE PRACTICE, ALL OF WHICH ARE HEREBY EXCLUDED TO THE EXTENT ALLOWED BY APPLICABLE LAW. BECAUSE CONDITIONS OF USE IN INDUSTRIAL APPLICATION ARE OUTSIDE OF HABASIT'S CONTROL, HABASIT DOES NOT ASSUME ANY LIABILITY CONCERNING THE SUITABILITY AND PROCESS ABILITY OF THE PRODUCTS, INCLUDING INDICATIONS ON PROCESS RESULTS AND OUTPUT.