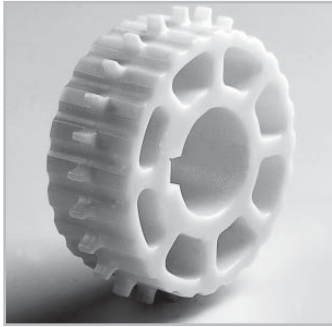


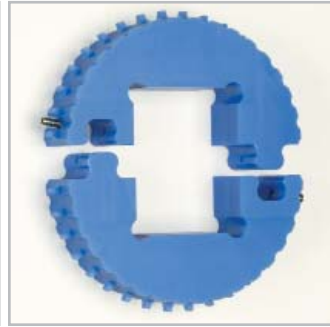
# HabasitLINK® sprockets – 1/2" pitch belting SM605, CM605



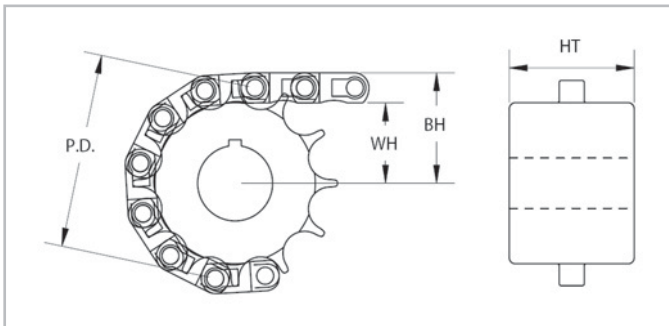
Molded sprocket



Machined sprocket



Puzzle split sprocket



Sprocket part number	Number of teeth	(PD) Nominal pitch diameter		(WH) Shaft center to top of wearstrip		Smooth Mesh (BH) Shaft center to top of belt		Curved Mesh (BH) Shaft center to top of belt		(HT) Hub thickness	
		inch	mm	inch	mm	inch	mm	inch	mm	inch	mm
70512M	12	1.90	48	0.80	20	1.10	28	1.14	29	1.5	38
70515M	15	2.40	61	1.05	27	1.35	34	1.39	35	1.5	38
70519	19	3.02	77	1.37	35	1.67	42	1.71	43	1.5	38
70524M	24	3.90	99	1.80	46	2.10	53	2.14	54	1.5	38
70528	28	4.47	114	2.09	53	2.39	61	2.43	62	1.5	38
70536M	36	5.80	147	2.75	70	3.05	77	3.09	78	1.5	38

M = molded sprocket.

Split sprockets and other tooth sizes are available. Standard machined sprocket material is UHMW, Nylon and Urethane are available.

Sprocket part number	Available bore size														
	20 mm	3/4"	25 mm	25 mm sq.	1"	1" sq.	30 mm	1-1/4"	1-7/16"	1-1/2"	1-1/2" sq.	2" sq.	40 mm	40 mm sq.	2-1/2" sq.
70512M	✓	✓	✓	-	✓	-	-	-	-	-	-	-	-	-	-
70515M	-	-	✓	✓	✓	✓	-	-	✓	✓	-	-	-	-	-
70519	✓	✓	✓	✓	✓	✓	✓	✓	✓	✓	-	-	-	-	-
70524M	-	-	✓	-	✓	-	✓	✓	✓	✓	✓	✓	✓	✓	-
70528	✓	✓	✓	✓	✓	✓	✓	✓	✓	✓	✓	✓	✓	✓	-
70536M	-	-	-	-	✓	-	✓	✓	✓	✓	✓	✓	✓	✓	-

M = molded sprocket.

All bore sizes are round bore unless designated square (sq.).