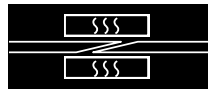


# Heat press with water cooling

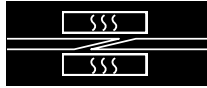
## **PM-1009/160W-B/4568**





## CONTENTS

<b>0</b>	<b>PREFACE .....</b>	<b>3</b>
<b>1</b>	<b>MACHINE IDENTIFICATION DATA.....</b>	<b>4</b>
1.1	IDENTIFICATION PLATE AND EC MARKINGS .....	4
<b>2</b>	<b>REGULATIONS AND GENERAL WARNINGS .....</b>	<b>7</b>
2.1	MANUAL LAYOUT CRITERIA.....	7
2.2	MANUAL USE CRITERIA .....	7
<b>3</b>	<b>TECHNICAL SPECIFICATIONS .....</b>	<b>9</b>
3.1	ELECTRICAL SPECIFICATIONS.....	9
3.2	PNEUMATIC CHARACTERISTICS.....	9
3.3	DIMENSIONS AND ENVIRONMENTAL CHARACTERISTICS .....	9
3.4	PRODUCTION SPECIFICATIONS .....	9
3.5	DIMENSIONS .....	10
<b>4</b>	<b>DRAWINGS AND SPARE PARTS LIST .....</b>	<b>11</b>
4.1	PM-1009/160W-B/4568 SERIES PRESS OVERALL VIEW .....	11
4.2	EXTERNAL UNIT PART – H08D003243 .....	12
4.3	H08D006490 – BEAM UNIT .....	14
4.4	H08D006490– INTERNAL BEAM UNIT .....	16
4.5	H08D004710– BELT PRESS UNIT .....	18
4.6	H08D004710 UPPER PRESSER UNIT .....	20
4.7	H08D003246 PAD UNIT .....	21
4.8	H08008E100 - PNEUMATIC CONNECTION .....	23
<b>5</b>	<b>PRESS WIRING DIAGRAM .....</b>	<b>24</b>
<b>6</b>	<b>PRODUCT AND PRODUCT USE LIABILITIES.....</b>	<b>25</b>



## 0 Preface

Habasis thanks you for purchasing the

### **PM-1009/160W-B/4568**

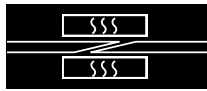
This press belongs to the press range called PM-09/160W.

If you handle your PM-1009/160W-B/4568 press with care, it will guarantee joint reliability and quality for many years to come.

This document includes spare parts and product diagrams



Observing the instructions in this manual lets you work during: handling, installation, use and maintenance phases in safe conditions while guaranteeing good machine working order and economies of scale. HABASIT Italiana S.p.A. is not liable for damages due to negligence or failure to observe these instructions.

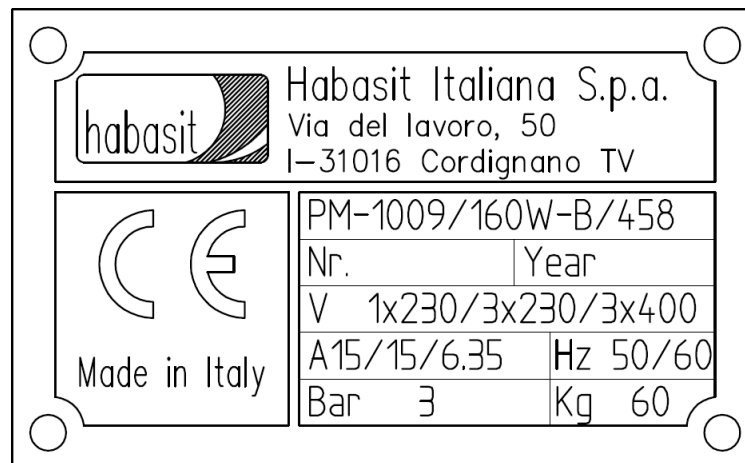


# 1 Machine identification data

<b>Machine</b>	Heat press
<b>Type/Series</b>	PM-1009/160W-B/4568
<b>Serial number</b>	See EC identification plate
<b>Year of construction</b>	See EC identification plate

## 1.1 Identification plate and EC markings

The following identification plate was affixed to the machine (FAC SIMILE):



This plate SHOULD NOT BE REMOVED for any reason. If damaged, please request a copy.

If necessary, the plate data must be communicated for service or spare parts.



## DICHIARAZIONE DI CONFORMITÀ

DECLARATION OF CONFORMITY

2006/95/CE



Noi We

**HABASIT ITALIANA S.p.A.**  
**Via del Lavoro, 50**  
**I - 31016 Cordignano (TV) - ITALY**

dichiariamo sotto la nostra esclusiva responsabilità *declare under our sole responsibility*  
che l'apparecchiatura tipo: *that the device type:*

**Pressa a caldo Hot press**

Modello: *Series:*

**PM-1009/160W-B/4568**

Matricola: *Serial Number:*

è conforme alle seguenti direttive: *is in conformance with the following directives:*

2006/95/CE

Direttiva Bassa Tensione *Low Voltage Directive*

2004/108/CE

Direttiva Compatibilità Elettromagnetica *Electromagnetic Compatibility Directive*

ed è conforme alle disposizioni delle seguenti norme *and is in conformance with the rules of the*  
armonizzate: *following harmonized standard:*

UNI EN ISO 12100/2010

CEI EN 60204-1/2006

Il Fascicolo Tecnico viene conservato presso: *The Technical File is stored at:*

**HABASIT ITALIANA S.p.A.**  
**Via del Lavoro, 50**  
**I - 31016 Cordignano (TV) - ITALY**

Cordignano,

Il Direttore Generale  
*General Manager*

Ugo Passadore

Il Responsabile del Fascicolo Tecnico  
*Technical File Manager*

Matteo Mapelli

.....

.....



## DICHIARAZIONE DI INCORPORAZIONE

### DECLARATION OF INCORPORATION

2006/42/CE – Allegato II - B



Noi We

**HABASIT ITALIANA S.p.A.**  
**Via del Lavoro, 50**  
**I - 31016 Cordignano (TV) - ITALY**

dichiariamo sotto la nostra esclusiva responsabilità che la quasi-macchina tipo: *declare under our sole responsibility that the partly completed machinery type:*

**Pressa a caldo Hot press**

Modello: *Series:*

**PM-1009/160W-B/4568**

Matricola: *Serial Number:*

è conforme ai requisiti essenziali della salute e sicurezza il cui elenco è riportato nella documentazione tecnica pertinente, secondo l'allegato VII – B della Direttiva 2006/42/CE, conservata presso: *is in conformance with the essential health and safety requirements, the list of such is reported in the relevant technical documentation, according with the annexed VII – B of 2006/42/EC directive, at:*

**HABASIT ITALIANA S.p.A.**  
**Via del Lavoro, 50**  
**I - 31016 Cordignano (TV) - ITALY**

ed è inoltre conforme alla Direttiva Bassa Tensione 2006/95/CE. *and is also in conformance with the 2006/95/CE Low Tension Directive.*

Ci impegnamo a trasmettere le informazioni pertinenti su richiesta adeguatamente motivata dalle autorità nazionali. *We strive to provide the relevant information on reasoned request by national authorities.*

E' comunque espressamente vietato procedere all'avviamento della quasi-macchina in oggetto prima che il sistema al quale è prevista la sua incorporazione sia dichiarato conforme alle vigenti direttive CE. *It is however expressly forbidden to proceed with the start up of the said partly completed machinery before the system which is intended for its incorporation is declared to be in conformity with the current EC directive.*

Cordignano,

Il Direttore Generale  
*General Manager*

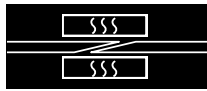
Ugo Passadore

Il Responsabile della documentazione tecnica  
*Technical documentation manager*

Matteo Mapelli

.....

.....



## 2 Regulations and general warnings

### 2.1 Manual layout criteria

This manual observes the organizational rules and requirements of Directive 2006/42/, duly amended, being the Directive of the Council of the European Community, concerning the reconciliation of the laws of member states regarding machines, and also all the other Directives and Regulations referred to in the said Machine Directive, inspired by criteria which, in addition to illustrating the technical characteristics of the machine and its use, maintenance and troubleshooting methods, also clearly indicate the following:

- All the protection measures adopted on the machine, fully integrating design safety planning and construction safety
- All protection measures to be adopted to meet those risks that cannot be completely eliminated
- All indications for the training of personnel using the machine, while indicating where it is necessary to provide for individual safety protection devices.
- The manual is divided up into sections. Each section deals with a specific subject in which every aspect of safety is considered and clearly highlighted in the text.

### 2.2 Manual use criteria

HABASIT encourages the reader to fully read this manual when receiving the equipment it comes with and, in any case, before handling the equipment. This manual is designed to provide all the instructions, indications and warnings needed by the user to learn about the equipment, understand its main operating principles and be suitably informed for safe use.

In addition to the instructions in this manual, we would ask users to observe any specific current laws.

This manual must be considered as an essential part of the equipment. Its contents must be made known to the entrusted maintenance persons and users.

The purpose is to provide all the information required for good, correct use of the equipment.

The manuals must be kept throughout the equipment's life and must be updated in the event of modifications aimed at improving the equipment's performance.

The manuals must be available to qualified personnel.

Consultation of this manual is facilitated by the general index on the first page, which makes it possible to immediately find the subject of interest.

If the subject dealt with is particularly important it is highlighted with references to the type of technical personnel required to intervene.

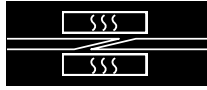
All updates HABASIT considers necessary to improve the quality of the equipment will be communicated by way of sending of further specific documentation or a new manual to replace the previous one.

Should the equipment be transferred to another customer, manuals must be included and HABASIT informed in order to provide future modifications or updates.

A copy of this manual, delivered with the equipment, is meant for the maintenance operators, who shall read and keep it near the equipment, and consult it before undertaking any action on the equipment.

The **PM-1009/160W-B/4568** press has been specifically developed for hot joining of HABASIT drive and conveyor parts using the Flexproof and Termofix process.

It was exclusively designed for the applications described hereto. Other or unsuitable applications are prohibited. Habasit shall not be liable for unintended application consequences. The **PM-1009/160W-B/4568** press was professionally manufactured in accordance with EC safety instructions. All assembly, maintenance and repair work, as well as the operation of the equipment, is expected to be carried out by qualified personnel or staff under the supervision of responsible specialists and experts.



For space reasons, these instructions for use cannot cover all possible operating, maintenance and repair aspects. The indications provided concern normal machine use by qualified personnel. In the event of doubt or in need of further information, always contact the manufacturer.



## 3 Technical specifications

### 3.1 Electrical specifications

Power	4 x 840 W = 3360 W
Supply voltage	230 V ~
Frequency	50-60 Hz

### 3.2 Pneumatic characteristics

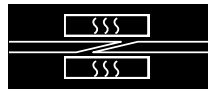
Fluid characteristics	Filtered, non-lubricated air
Maximum working pressure	3 bar $\pm$ 0.2 bar / 43.51psi
Min. supply diameter	Rapid connector of 1/4"

### 3.3 Dimensions and environmental characteristics

Dimensions (LengthxWidthxHeight) (including handles)	1350x380x300 mm 53.2 x 15 x 11.8 in
Total Weight	69 kg / 152.12 lbs.
Upper part weight	23 kg / 50.6 lbs.
Lower part weight	22 kg / 48.4 lbs.
Noise level	< 70 db
Working temperature	Between 15°C – 38°C / 59°F – 100.4°F
Humidity tolerance	Between 45 ÷ 70%

### 3.4 Production specifications

Max length of belt/tape	1000 mm / 39.37 in
Max width of belt/tape	10 mm / 0.4 in
Minimum length of belt/tape	940 mm / 37 in
Heating plate width	160 mm / 6.3 in
Max. working temperature	3 bar / 43.5 psi
Max. working temperature	199° C / 390° F
Temperature interval	+ 2° / - 4° C + 3.6° / - 7.2° F
Maximum heating plate temperature deviation from nominal value	+/- 2°C / 3.6° F
Mean heating time at 180° C	15 min. (230V~) 20 min. (400V~)
Cooling time from 180° C to 80° C	2 min.



### 3.5 Dimensions

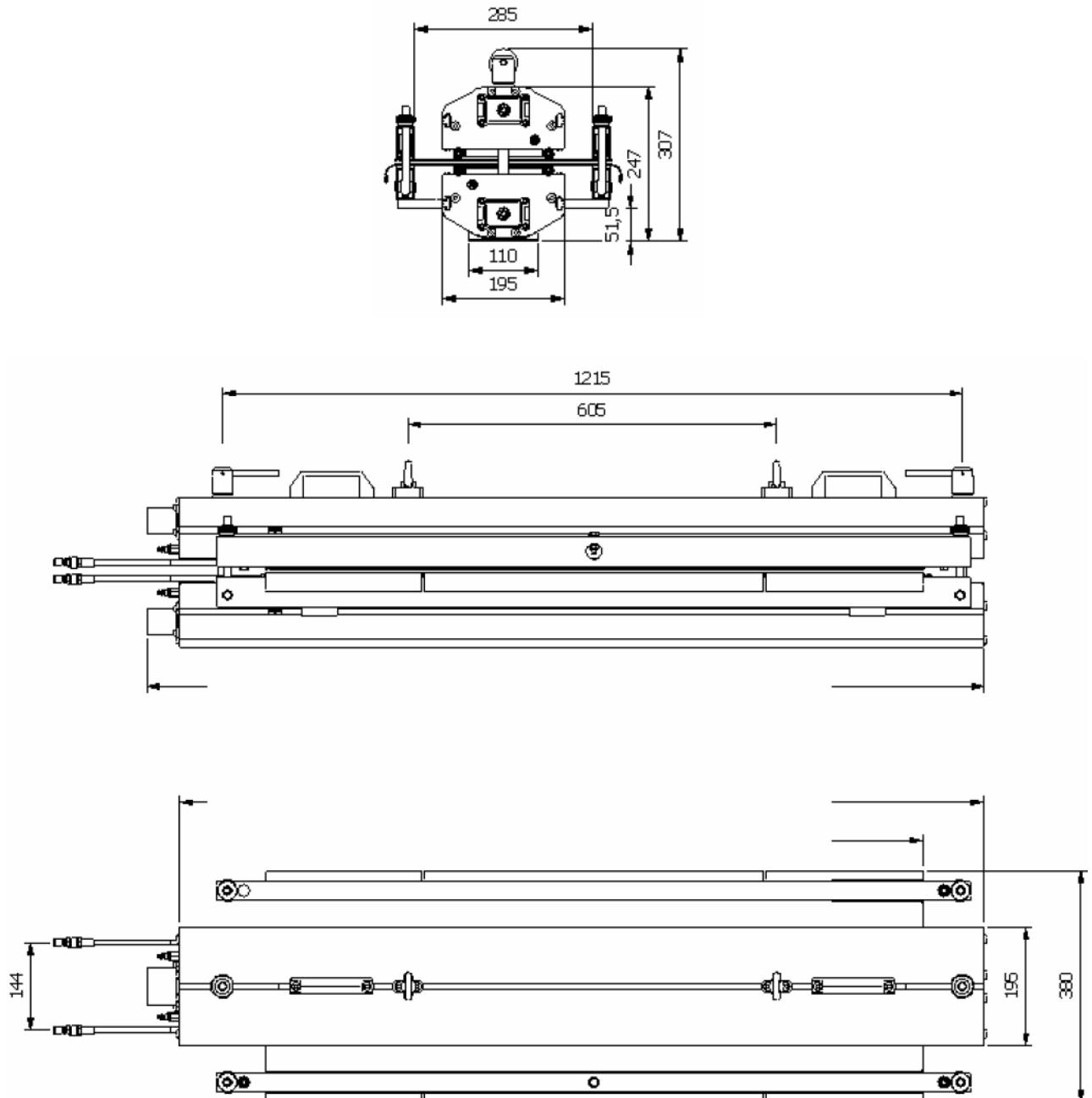
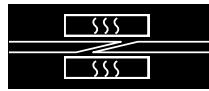


Figure 1 – PM-1009/160W-B/4568 press general dimensions



## 4 Drawings and spare parts list

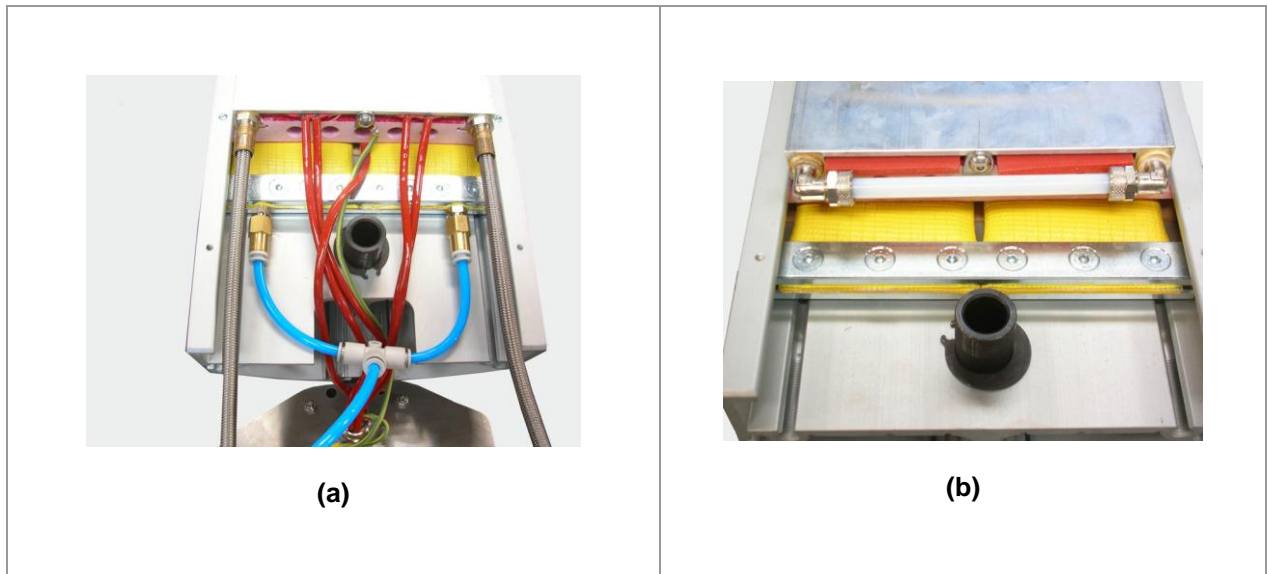
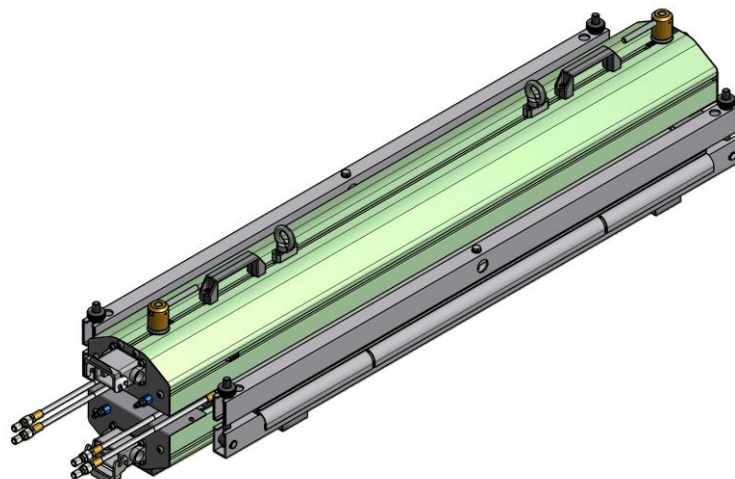
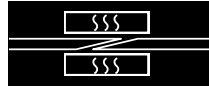


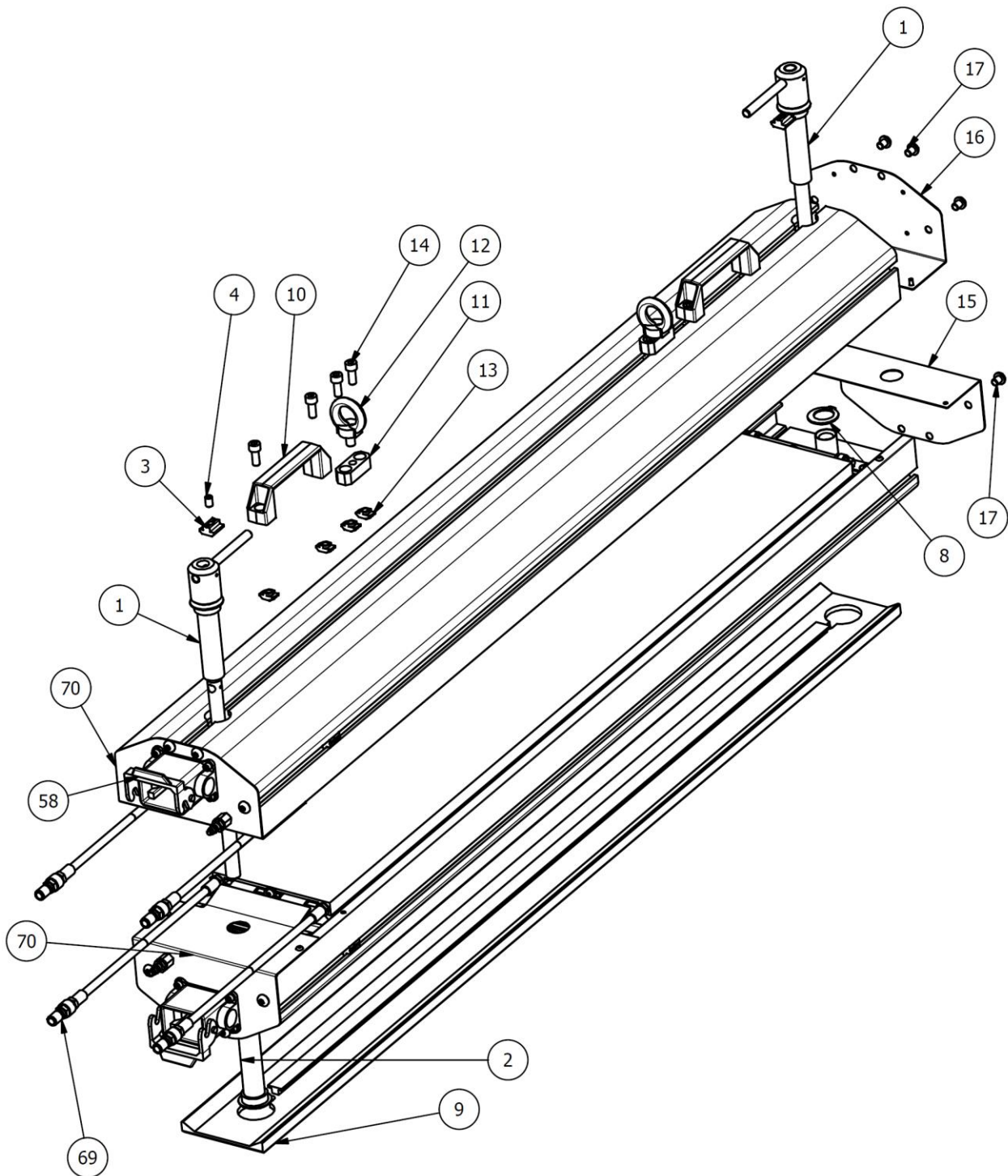
Figure 2 - PM-1009/160W-B/4568, press internal connection, electrical connector side (a) and opposite side (b).

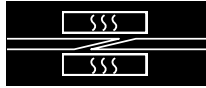
### 4.1 PM-1009/160W-B/4568 series press overall view



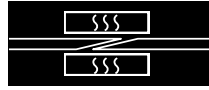


#### 4.2 External unit part – H08D003243

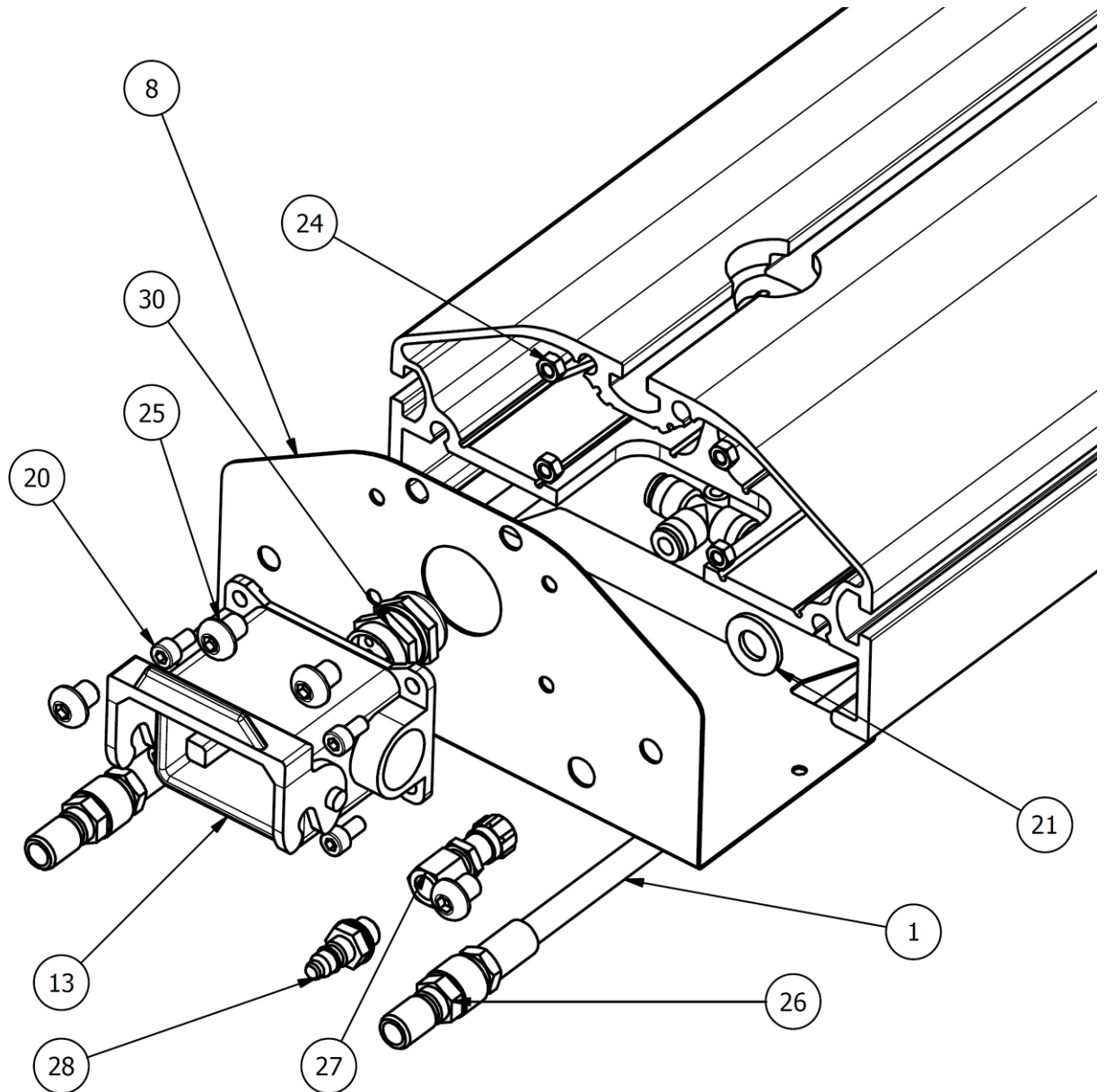


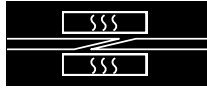


<b>PM-1009/160W-B/4568 Press</b>		<b>H08D003243 – External unit part</b>	
<b>Position</b>	<b>Q.ty</b>	<b>Code</b>	<b>Description</b>
1	2	H08D002867	LOWER BUSHING
2	2	H08D002866	UPPER BUSHING
3	4	H08N010958	NUT DAT0810 MECHANICA
4	4	H08N012001	FLAT-TIPPED GRUB SCREW ISO 4026 M8x12
8	4	H08N010408	SELF-LOCKING STOP RING WA-G 24 GANDINI
9	1	H08D003640	PEDESTAL PM-1009
10	2	H08N060003	M.443/140 N cod.37131 ELESA HANDLE
11	2	H08D003604	LIFTING RING LOCK
12	2	H08N010151	MALE LIFTING RING UNI 2947 M10 GALVANIZED.
13	8	H08N010956	DAM0810 HAMMER NUT M8x10
14	8	H08N010023	VTCEI UNI 5931-M8x20 GALVANIZED SCREW.
15	1	H08D002860	NEUTRAL SIDE HEAD
16	1	H08D004614	NEUTRAL SIDE HEAD LABEL HOUSING
17	16	H08N012005	VTBEI UNI-ISO 7380-M8x10 STAINLESS STEEL SCREW
58	2	H08D003020	FIXED CASE WITH 1 LEVER 6P+T IP65 ILME
69	4	H08N020416	MALE COUPLING 162A 1/4" FEMALE
70	2	H08D002861	CONNECTION SIDE HEAD

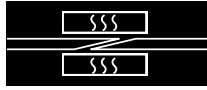


### 4.3 H08D006490 – Beam unit

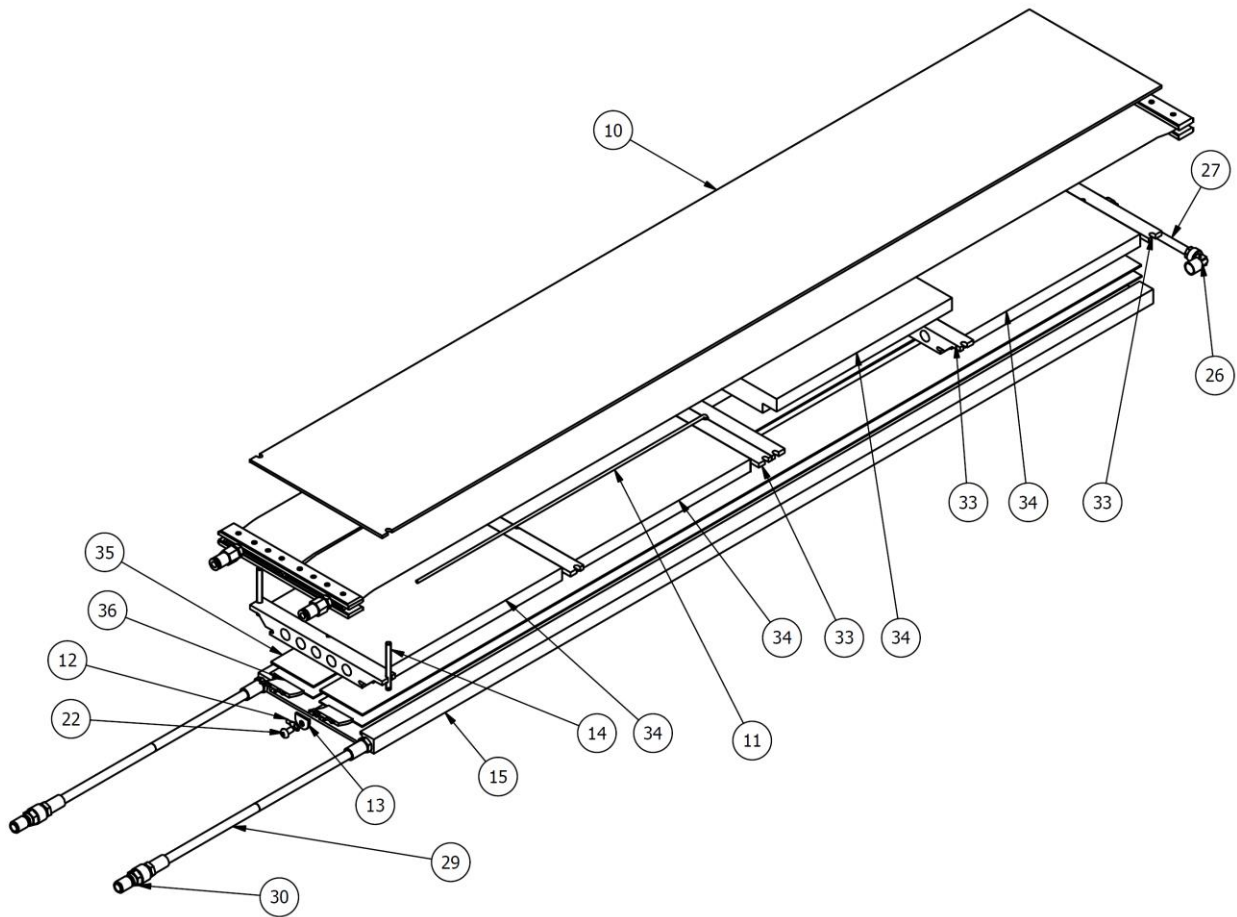


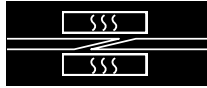


<b>PM-1209/160W-458 Press</b>		<b>H08D006490 – Beam unit</b>	
<b>Position</b>	<b>Q.ty</b>	<b>Code</b>	<b>Description</b>
1	2	H08205C117	Hose W dn 6.5 290 fixed male + fixed male 1/4" conic OT
8	1	H08D002861	CONNECTION SIDE HEAD
13	1	H08D003020	PERFORATED FIXED CASE WITH LEVER ILME - CHP 06 L
20	4	H08N010060	VTCEI UNI 5931-M5x10 GALVANIZED SCREW
21	1	H08N010136	UNI 6592-10.5x21 GALVANIZED WASHER
24	4	H08N011993	UNI 5588-68 M5 STAINLESS STEEL NUT
25	4	H08N012005	VTBEI UNI-ISO 7380-M8x10 STAINLESS STEEL SCREW
26	2	H08N020416	MALE COUPLING 162A 1/4" FEMALE
27	1	H08N020951	FESTO 9425 QCK-1/8-PK-4-B
28	1	H08N020953	MALE COUPLING 11 mini 1/8" code 0102011
30	1	H08N040201	BOL-MF PG13 ELEKTROZUBEHÖR WIRE CLAMP

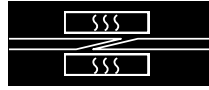


#### 4.4 H08D006490- Internal beam unit

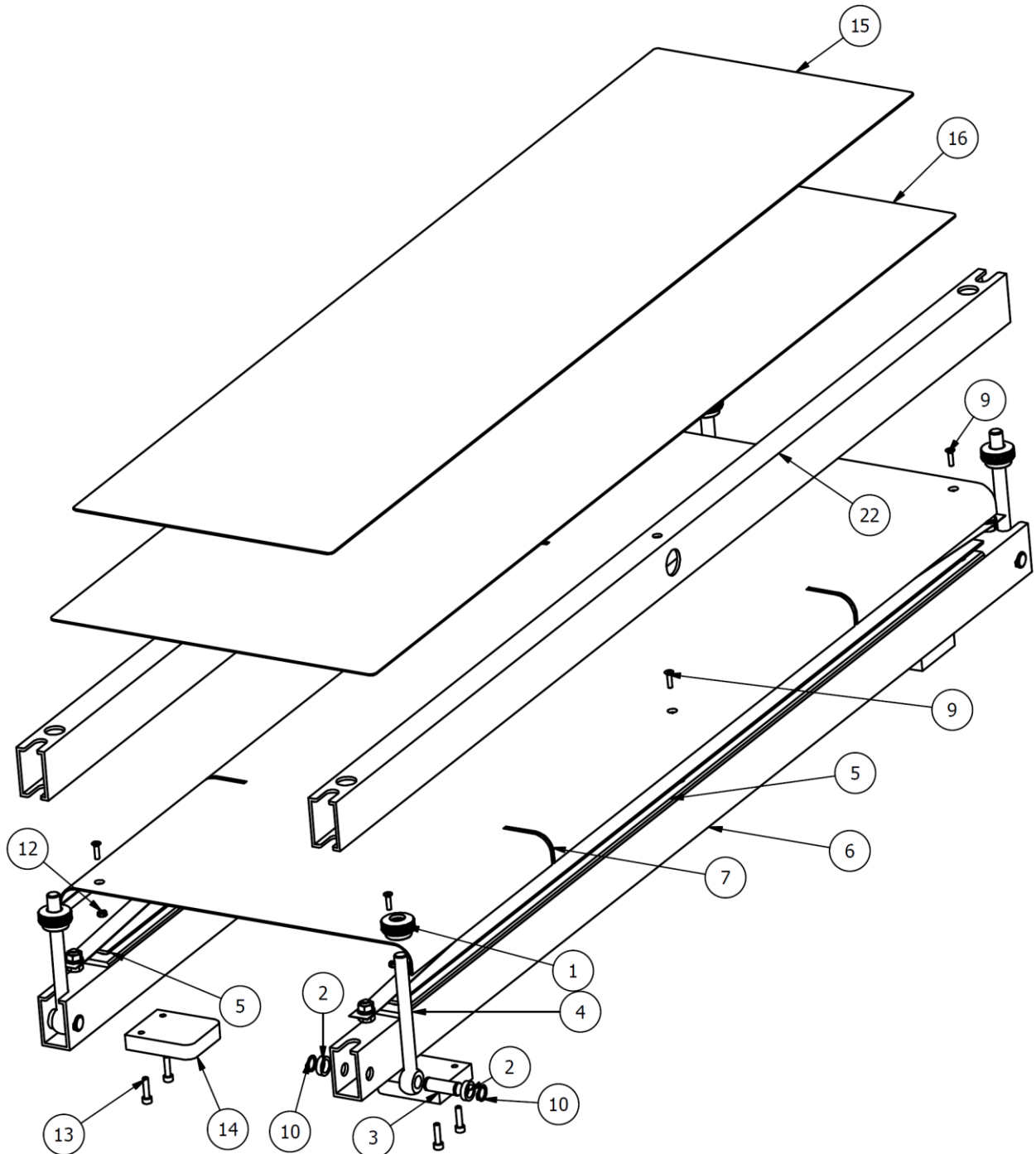


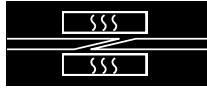


PM-1009/160W-B/4568 Press		H08D003244 – – Internal beam unit	
Position	Q.ty	Code	Description
10	1	H08D003250	MULTILAYER BEACH SEPARATOR PM-1009
11	1	H08D003276	THERMOCOUPLE UL-CSA
12	1	H08D003138	GROUNDING WIRE
13	2	H08D002862	RESISTANCE LOCK PLATE
14	2	H08D002864	CENTRING SCREW
15	1	H08D003251	HEATING PLATE PM-1009
22	2	H08N011991	VTBEI UNI-ISO 7380-M5x10 STAINLESS STEEL SCREW
26	2	H08N021165	1500 8/6-1/4 CAMOZZI Raccordo a gomito
27	1	H08N060794	Teflon hose Øi6xØe8
29	4	H08205C117	Hose W dn 6.5 290 fixed male + fixed male 1/4" conic OT
30	2	H08N020416	MALE COUPLING 162A 1/4" FEMALE
33	6	H08D005175	UPPER INSULATOR
34	4	H08D006105	INSULATING MONOLUX L=243
35	2	H08D005902	RESISTANCE COVER PLATE PM-1009
36	2	H08N040404	SILICON RESISTANCE 1103x59 230V 900W code1KEITF875004

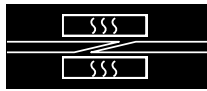


### 4.5 H08D004710- Belt press unit

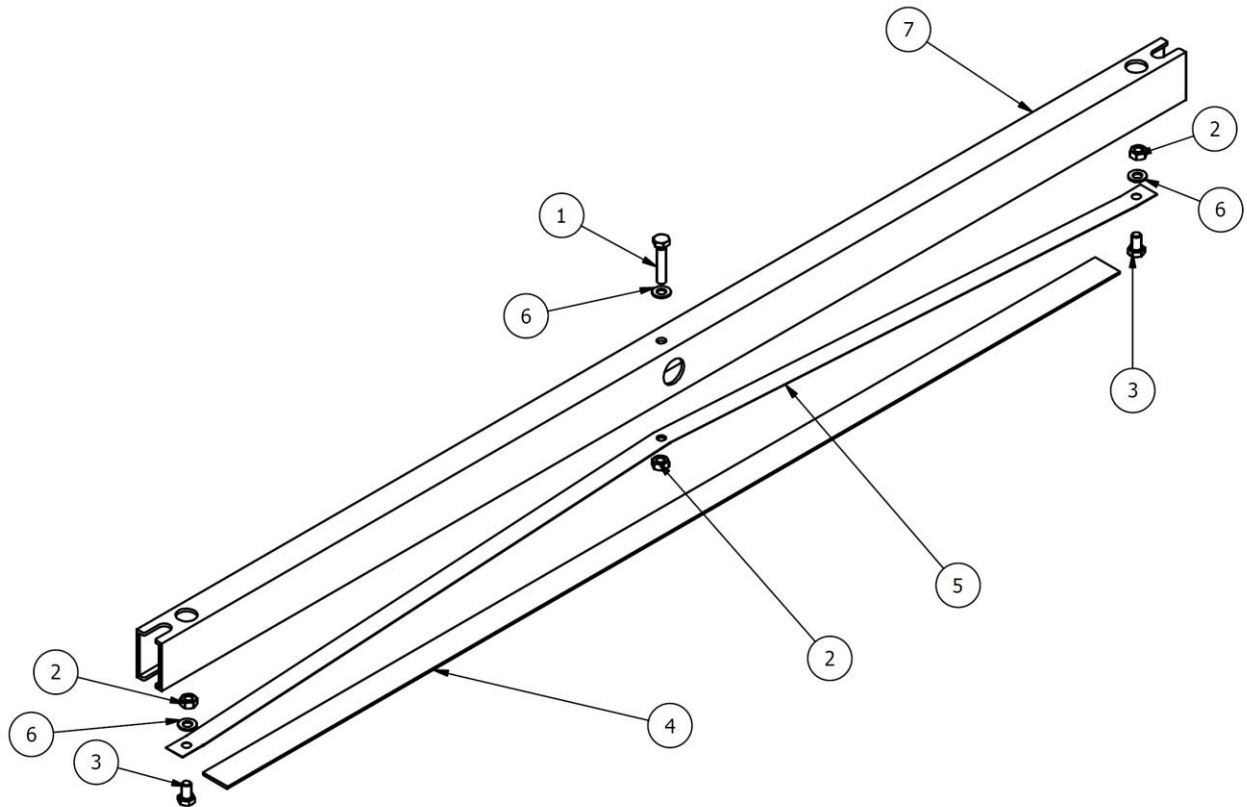




<b>PM-1009/160W-B/4568 Press</b>		<b>H08D003245 – Belt press unit</b>	
<b>Pos.</b>	<b>Q.ty</b>	<b>Code</b>	<b>Description</b>
1	4	H08N010496	B. 193/30 FP-M12 KNURLED KNOB code 2514
2	8	H08205D106	SCREW EYE SPACER
3	4	H08205D105	PRESSER CLOSURE SCREW PIN
4	4	H08N010144	DIN 444 M12x130 EYE SCREW code GN.12536
5	2	H08D003259	INSULATING SHIM PM-1009
6	2	H08D003253	LOWER PRESSER PM-1009
7	1	H08D003255	SHEET METAL SURFACE PM-1009
8	8	H08N011993	UNI 5588-68 M5 STAINLESS STEEL NUT
9	6	H08N011999	VTSEI UNI 5933-M4x16 STAINLESS STEEL SCREW
10	8	H08N010149	EXTERNAL SEEGER e12 UNI 7435
11	8	H08N011992	UNI 6592-5.3x10 STAINLESS STEEL WASHER
12	6	H08N011985	UNI 5588-68 M4 STAINLESS STEEL NUT
13	8	H08N010594	VTCEI UNI 5931 - M5x20 GALVANIZED SCREW.
14	4	H08D002881	CENTERING SHIM
15	1	H08D003256	WELDING PLATE PM-1009 L=280
16	1	H08D003257	WELDING PLATE PM-1009 L=350
17	6	H08N010216	UNI 5588-68 M8 GALVANIZED NUT.
18	4	H08N010127	VTE UNI 5739-M8x14 GALVANIZED .
19	2	H08D004156	SILICON PROFILEPM-1009
20	2	H08D004157	TIE PM-1009
21	8	H08N010009	UNI 6592-8.4x17 GALVANIZED WASHER
22	2	H08D003254	UPPER PRESSERPM-1009
23	2	H08N011748	VTE UNI 5739-M8x40 GALVANIZED SCREW.



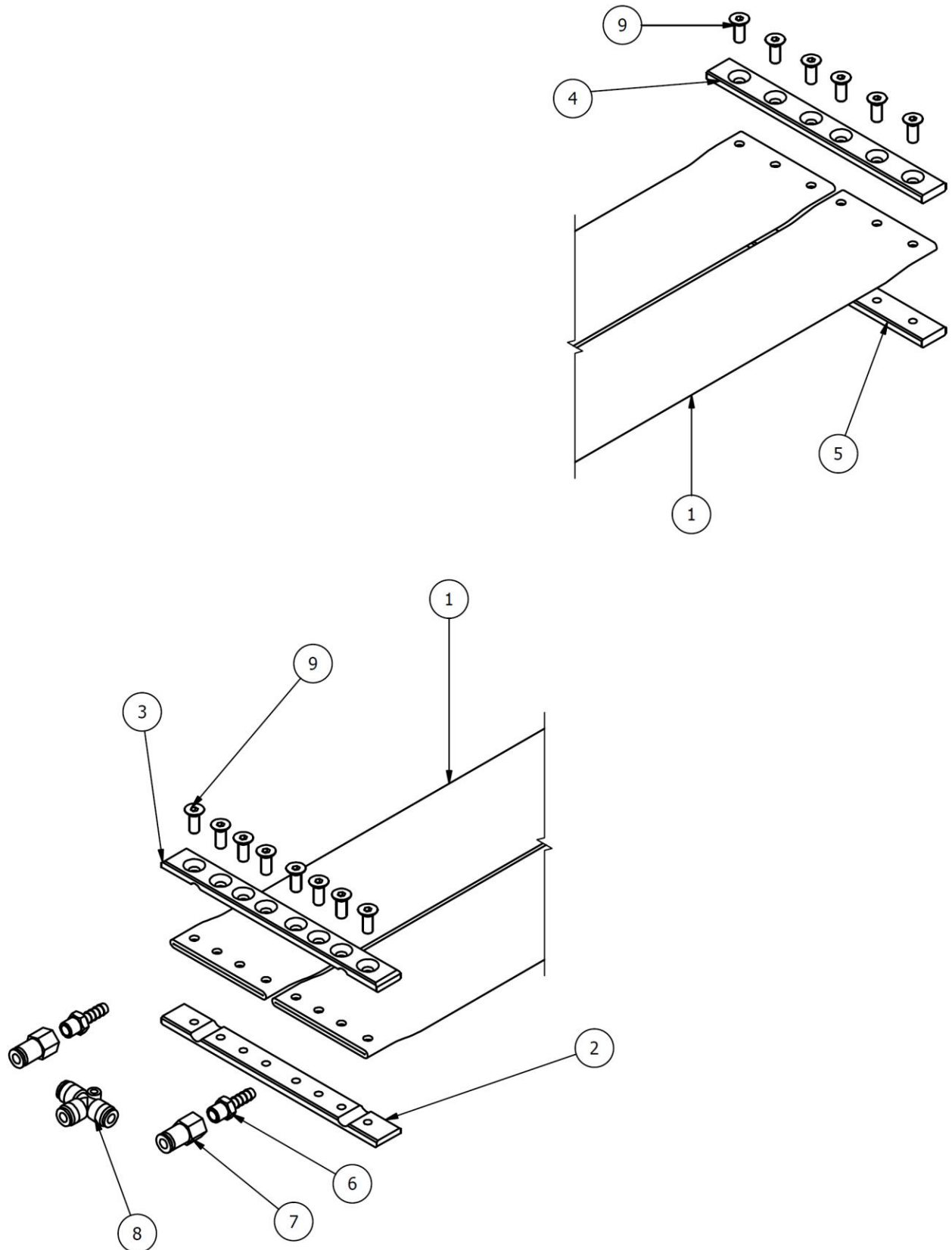
#### 4.6 H08D004710 Upper presser unit

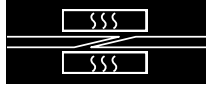


PM-1009/160W-B/4568 Press		H08D004710 – Upper presser unit	
Pos.	Q.ty	Code	Description
1	1	H08N011748	VTE UNI 5739-M8x40 GALVANIZED SCREW.
2	3	H08N010216	UNI 5588-68 M8 GALVANIZED NUT.
3	2	H08N010127	VTE UNI 5739-M8x14 GALVANIZED .
4	1	H08D004156	SILICON PROFILEPM-1009
5	1	H08D004157	TIE PM-1009
6	4	H08N010009	UNI 6592-8.4x17 GALVANIZED WASHER
7	1	H08D003254	UPPER PRESSER PM-1009

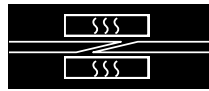


### 4.7 H08D003246 Pad unit

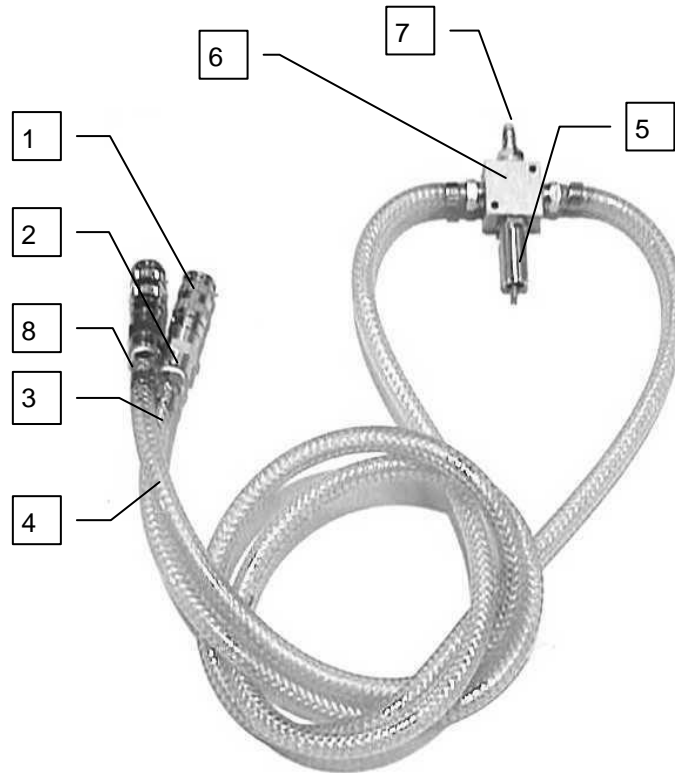




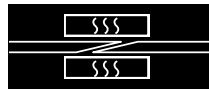
PM-1009/160W-B4568 Press			Pressurizing pad unit – H08D003246
Position	Q.ty	Code	Description
1	2	H08D003247	PAD HOSE PM-1009
2	1	H08D003015	REAR CUSHION RESTRAINING PLATE
3	1	H08D003014	REAR CUSHION RESTRAINING PLATE
4	1	H08D003016	FRONT CUSHION RESTRAINING PLATE
5	1	H08D003017	FRONT CUSHION RESTRAINING PLATE
6	2	H08N020946	HOSE-END FITTING code 3040-8-1/8 AIGNEP
7	2	H08N020948	KQ2F06-01 (6x1/8") FITTING SMC
8	1	H08N021083	KQ2T06-00 D6 SMC T INTERMEDIATE FITTING
9	14	H08N010003	VTSEI UNI 5933-M6x16 GALVANIZED SCREW



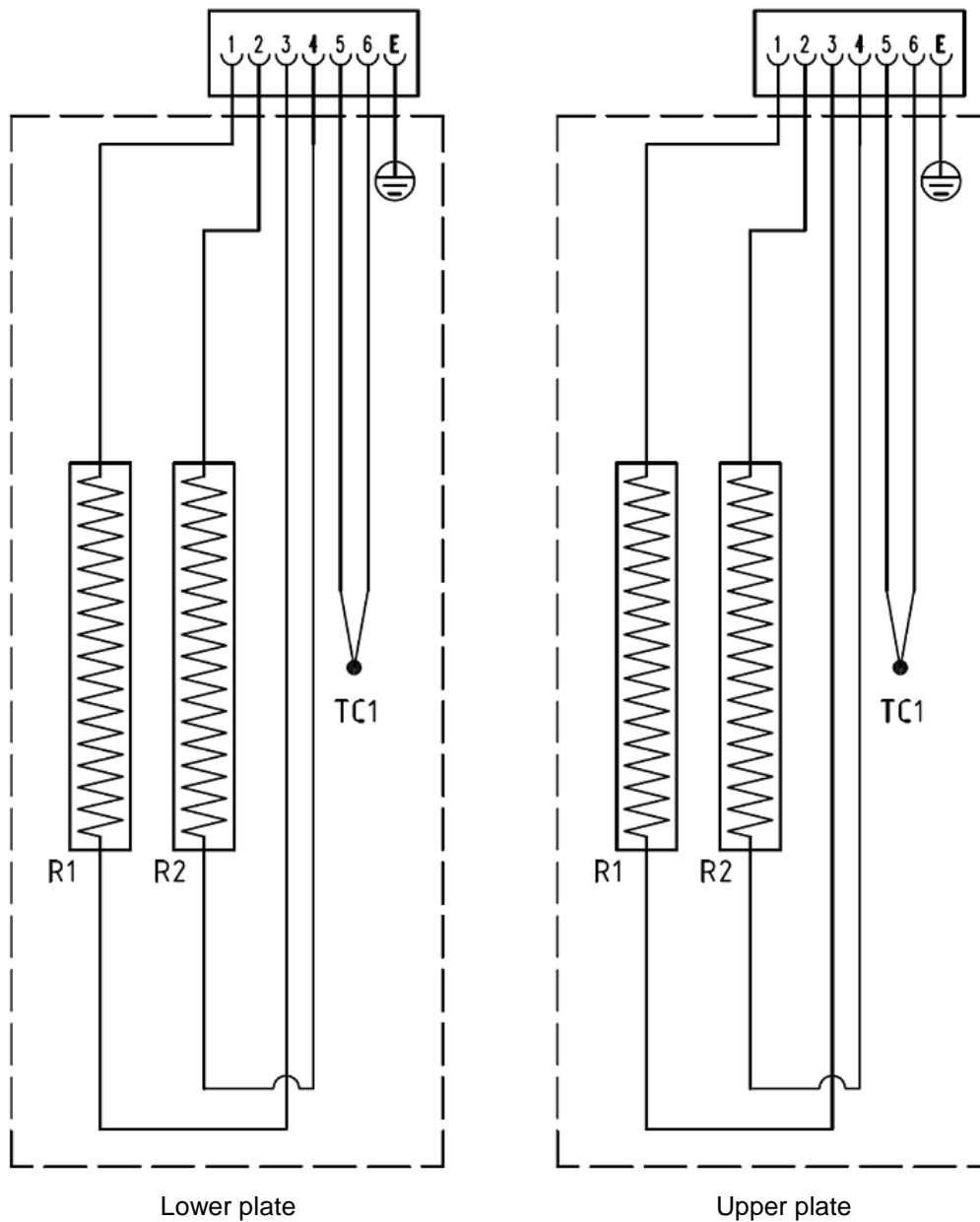
#### 4.8 H08008E100 - Pneumatic connection



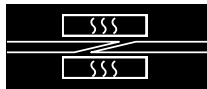
Position	Code	Description	U.M.	Q.ty
	H08008E100	PNEUMATIC CONNECTION	NR	1
1	H08N020655	1/4" mini 04 QUICK COUPLING	NR	2
2	H08N020407	HOSE-END FITTING 6x1/4"	NR	4
3	H08N020410	PLASTIC TUBE PVC 6x12	NR	1
4	H08N020410	PLASTIC TUBE PVC 6x12	NR	1
5	H08N020406	SAFETY VALVE MAX PRESSURE 3BAR 1/4"	NR	1
6	H08N020950	1/4" 4-WAY AIR DISTRIBUTOR	NR	1
7	H08N020656	1/4" mini 12 MALE QUICK COUPLING	NR	1
8	H08N020412	2-EAR 11X13 HOSE CLAMP COLLAR	NR	4



## 5 Press wiring diagram



	Code	Description
R1	H08D040386	Silicon resistance 230V 840W
R2	H08D040386	Silicon resistance 230V 840W
TC1	H08D003276	Thermocouple



## 6 Product and product use liabilities

For any further clarifications, contact Habasis Italiana S.p.A. customer service at the following address:

**Habasis Italiana S.p.A.**  
Via del Lavoro, 50.  
**31016 CORDIGNANO (TV) ITALY**  
Phone: +39 0438 9113  
Fax: + 39 0438 912374  
E-mail: [info@habasis.it](mailto:info@habasis.it)  
Internet: [www.habasis.com](http://www.habasis.com)

### Product liability, application considerations

The proper selection and application of Habasis products, including the related area of product safety, is the responsibility of the customer.

All indications / information are recommendations and believed to be reliable, but no representations, guarantees, or warranties of any kind are made as to their accuracy or suitability for particular applications. The data provided herein are based on laboratory work with small-scale test equipment, running at standard conditions, and do not necessarily match product performance in industrial use. New knowledge and experiences can lead to modifications and changes within a short time without prior notice.

BECAUSE CONDITIONS OF USE ARE OUTSIDE OF HABASIT'S AND ITS AFFILIATED COMPANIES CONTROL, WE CANNOT ASSUME ANY LIABILITY CONCERNING THE SUITABILITY AND PROCESS ABILITY OF THE PRODUCTS MENTIONED HEREIN. THIS ALSO APPLIES TO PROCESS RESULTS / OUTPUT / MANUFACTURING GOODS AS WELL AS TO POSSIBLE DEFECTS, DAMAGES, CONSEQUENTIAL DAMAGES, AND FURTHER-REACHING CONSEQUENCES

This use and maintenance manual and its attachments are translated from original language  
(Italian)