

# HabasitLINK® Accessories – 1" Pitch Belting

## Hold Down Devices for M2500 (Straight Belts)

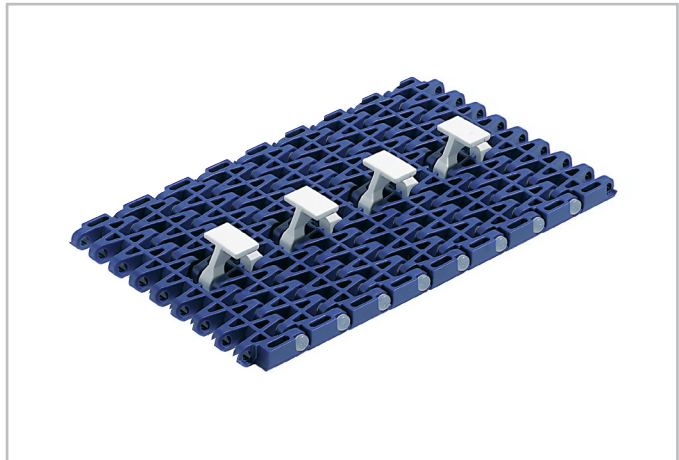
For elevators with back-bending (Z-conveyors) **hold down devices** are used to keep the belt down when it is changing from horizontal to inclined direction. For wide belts (e. g. > 600 mm (23.6") wide), slider shoes on the belt edge are often not sufficient to keep it on the track. In such cases hold down devices on the bottom side of the belt are used to guide it through the back-bending curve. Further details see design guide.

**Compatibility:** The hold down device can be put into M2500 1" HabasitLINK® straight running modular belt. The modules are inserted into the prepared position, one module every second row. As long as link increment is (16.6 mm) respected any position over the belt width is possible. For a center positioning consider an offset "e" of 4.2 mm. Allow the necessary distance for the sprocket engagement!

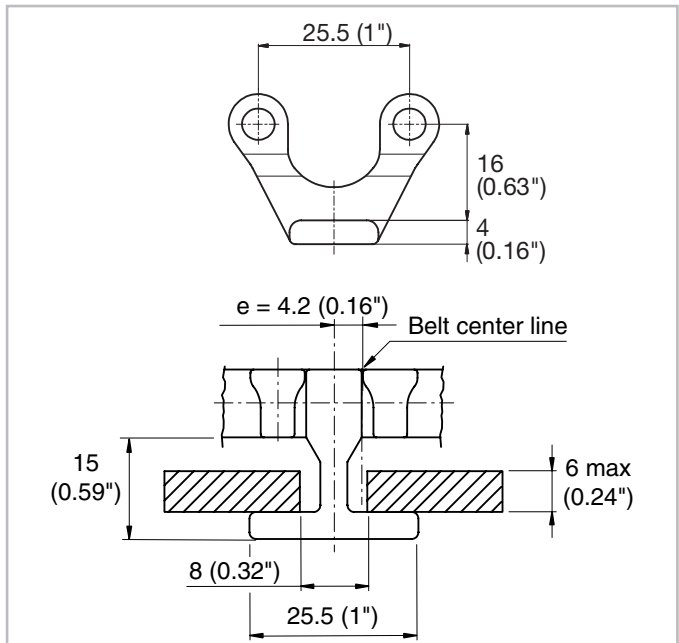
**Back-bending radius R:** min. 250 mm (10")

**Sprockets:** minimum size  
 M25S12 with 40 mm / 1.5" square bore  
 M25S12 with 30 mm round bore  
 M25S10 with 1" square bore  
 M25S10 with 30 mm round bore

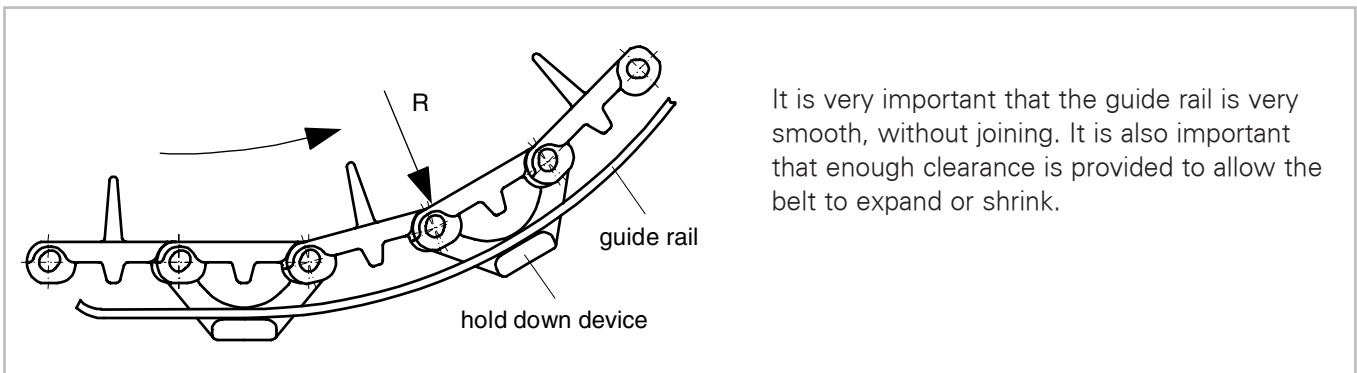
**Standard materials:** POM white  
 Other materials on request.



M2533 with M2500V01



Hold down device M2500V01



It is very important that the guide rail is very smooth, without joining. It is also important that enough clearance is provided to allow the belt to expand or shrink.