

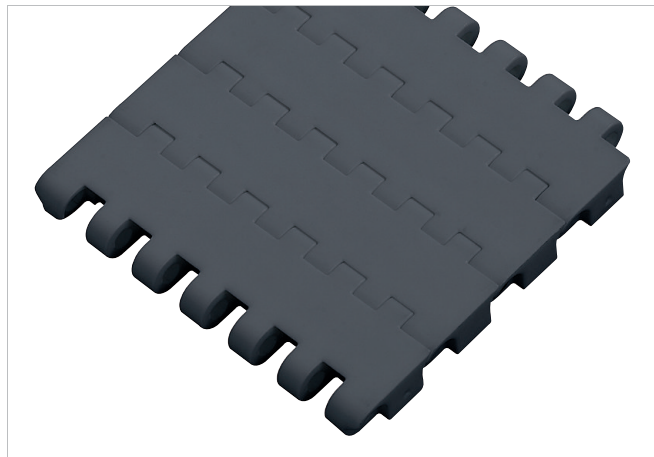
# HabasitLINK®

## M2670 Flat Top Heavy Duty 1" MTW



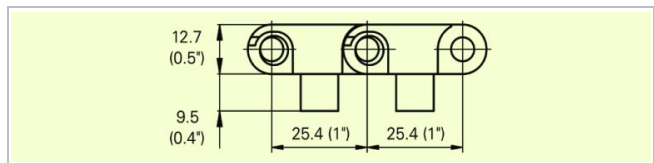
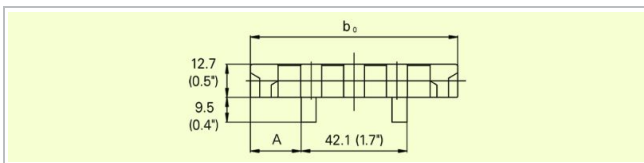
### Description

- Mold to width heavy duty belt
- Imperial widths
- 12.7 mm (0.5") thick
- High strength and stiffness
- 0% open area
- Closed hinge
- Rod diameter 6 mm (0.22")
- Smart Fit rod retention
- Double row solid and split sprockets
- Two versions:
  - M2670Kxx (modules without tabs),
  - M2670Kxx-T2 (modules with 2 tabs)



### Available accessories

- For standard guiding profiles, refer to the Habiplast® brochure



### Belt data

	Nominal belt width $b_0$		A		Belt material	Rod material	Nominal tensile strength $F_N$ straight run		Belt weight $m_s$	
	mm	inch	mm	inch			N	lbf	kg/m	lb/ft
M2670K03-T2	82.6	3.3	20.1	0.80	PP	PP	1700	383	0.81	0.54
M2670K03-T2	82.6	3.3	20.1	0.80	POM	PA	3200	720	1.16	0.78
M2670K03-T2	82.6	3.3	20.1	0.80	POM	PBT	2200	495	1.16	0.78
M2670K03-T2	82.6	3.3	20.1	0.80	PP	POM	1800	405	0.81	0.54
M2670K03-T2	82.6	3.3	20.1	0.80	PP	PA	1800	405	0.81	0.54
M2670K04-T2	114.3	4.5	36.0	1.40	PP	PA	2600	585	1.13	0.76
M2670K04-T2	114.3	4.5	36.0	1.40	PP	POM	2600	585	1.13	0.76
M2670K04-T2	114.3	4.5	36.0	1.40	PP	PP	2300	518	1.13	0.76
M2670K04-T2	114.3	4.5	36.0	1.40	POM	PA	4500	1013	1.62	1.09
M2670K04-T2	114.3	4.5	36.0	1.40	POM	PBT	3400	765	3.62	1.09
M2670K06-T2	152.4	6.0	55.1	2.20	PP	POM	3800	855	1.54	1.03
M2670K06-T2	152.4	6.0	55.1	2.20	POM	PBT	4600	1035	2.21	1.49
M2670K06-T2	152.4	6.0	55.1	2.20	PP	PA	3800	855	1.54	1.03
M2670K06-T2	152.4	6.0	55.1	2.20	POM	PA	6100	1372	2.21	1.49
M2670K06-T2	152.4	6.0	55.1	2.20	PP	PP	3200	720	1.54	1.03
M2670K07-T2	190.5	7.5	74.1	2.90	PP	PP	4800	1080	1.86	1.25
M2670K07-T2	190.5	7.5	74.1	2.90	PP	PA	5000	1125	1.86	1.25
M2670K07-T2	190.5	7.5	74.1	2.90	POM	PBT	5700	1283	2.67	1.79
M2670K07-T2	190.5	7.5	74.1	2.90	POM	PA	8000	1800	2.67	1.79
M2670K07-T2	190.5	7.5	74.1	2.90	PP	POM	5000	1125	1.86	1.25

The belt weights are indicated for belts with tabs, the weight of belts without tabs are lower by circa 0.05 kg/m (0.03 lb/ft).

Real belt widths are in most cases 0.1% to 0.3% smaller.

# HabasitLINK®

## M2670 Flat Top Heavy Duty 1" MTW



Diameter of idling rollers (minimum)		Diameter of support rollers (minimum)		Diameter for gravity take-up and center drive rollers (minimum)	
mm	inch	mm	inch	mm	inch
50	2.00	50	2.00	100	4

### Temperature range

Module material	Rod material	Temperature range	
POM	PA	-40 °C to +93 °C	-40 °F to +200 °F
POM	PBT	-40 °C to +93 °C	-40 °F to +200 °F
PP	PA	+5 °C to +105 °C	+40 °F to +220 °F
PP	POM	+5 °C to +93 °C	+40 °F to +200 °F
PP	PP	+5 °C to +105 °C	+40 °F to +220 °F

**For detailed material properties** refer to the HabasitLINK® Engineering Guidelines.

**The nominal tensile strength** is valid for 23 °C (73 °F). The admissible tensile force depends on the operating temperature near the drive sprockets. Within the temperature range allowed, the admissible tensile force may vary from 100% to 20% of the nominal tensile strength. For detailed information and correct calculation of effective tensile force refer to the Calculation Guide in the HabasitLINK® Engineering Guidelines.

### Disclaimer

#### Product Application Disclaimer (valid for ALL Habasit products and mentioned on all PDS)

This disclaimer is made by and on behalf of Habasit and its affiliated companies, directors, employees, agents and contractors (hereinafter collectively "HABASIT") with respect to the products referred to herein (the "Products"). SAFETY WARNINGS SHOULD BE READ CAREFULLY AND ANY RECOMMENDED SAFETY PRECAUTIONS BE FOLLOWED STRICTLY! Please refer to the Safety Warnings herein, in the Habasit catalogue as well as installation and operating manuals. All indications / information as to the application, use and performance of the Products are recommendations provided with due diligence and care, but no representations or warranties of any kind are made as to their completeness, accuracy or suitability for a particular purpose. The data provided herein are based on laboratory application with small-scale test equipment, running at standard conditions, and do not necessarily match product performance in industrial use. New knowledge and experience may lead to re-assessments and modifications within a short period of time and without prior notice.

EXCEPT AS EXPLICITLY WARRANTED BY HABASIT, WHICH WARRANTIES ARE EXCLUSIVE AND IN LIEU OF ALL OTHER WARRANTIES, EXPRESS OR IMPLIED, THE PRODUCTS ARE PROVIDED "AS IS". HABASIT DISCLAIMS ALL OTHER WARRANTIES, EITHER EXPRESS OR IMPLIED, INCLUDING, BUT NOT LIMITED TO, IMPLIED WARRANTIES OF MERCHANTABILITY, FITNESS FOR A PARTICULAR PURPOSE, NON-INFRINGEMENT, OR ARISING FROM A COURSE OF DEALING, USAGE, OR TRADE PRACTICE, ALL OF WHICH ARE HEREBY EXCLUDED TO THE EXTENT ALLOWED BY APPLICABLE LAW. BECAUSE CONDITIONS OF USE IN INDUSTRIAL APPLICATION ARE OUTSIDE OF HABASIT'S CONTROL, HABASIT DOES NOT ASSUME ANY LIABILITY CONCERNING THE SUITABILITY AND PROCESS ABILITY OF THE PRODUCTS, INCLUDING INDICATIONS ON PROCESS RESULTS AND OUTPUT.