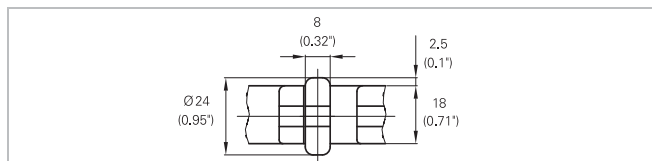
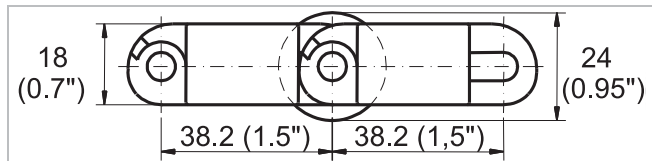
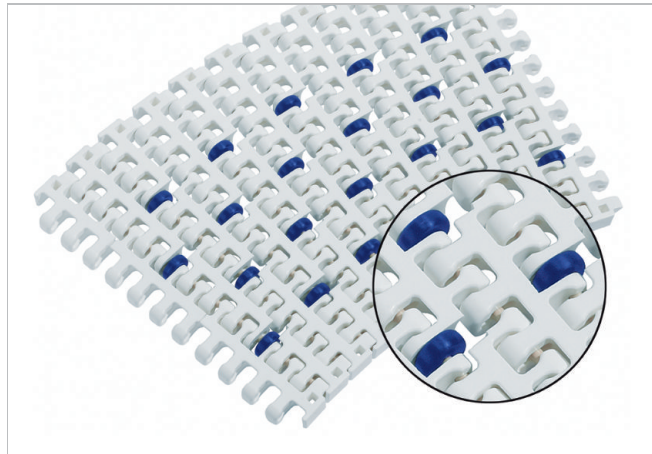


Description

- For radius and straight conveying
- 31% open area; largest opening 7x19 mm (0.27"x0.75")
- Roller lateral spacing see table belt data
- Free edge 60 mm (2.4")
- Rollers row spacing 38.2 mm (1.5")
- For low back pressure, wearstrips placed between rollers
- For product driven application wearstrips are placed directly under the rollers
- Excellent for cooling and draining
- Open hinge
- Food approved materials available
- Rod diameter 6 mm (0.24")



Belt data

Belt material		POM
Rod material		PA
Roller material		POM
Roller lateral spacing per row	mm / inch	100.0 / 4.00
Roller offset next row	mm / inch	50.0 / 2.00
Roller dimension diameter / width	mm inch	Ø 24 / 8 Ø 0.94 / 0.31
Nominal tensile strength F'_N straight run	N/m lb/ft	25000 1712
Nominal tensile strength F_N in curve ⁽¹⁾	N lbf	2000 450
Temperature range	°C °F	-40 - 93 -40 - 200
Belt weight m_b	kg/m ² lb/sqft	11.8 2.42

⁽¹⁾ For $b_0 > 450$ mm (18") higher values admissible. Refer to LINK-SeleCalc

Diameter of idling rollers (minimum)		Diameter of support rollers (minimum)		Diameter for gravity take-up and center drive rollers (minimum)		Backbending radius for elevators without side guards or hold down devices (minimum)		Backbending radius for elevators with side guards or hold down devices (minimum)	
mm	inch	mm	inch	mm	inch	mm	inch	mm	inch
90	3.50	90	3.50	150	6	150	6	250.0	10

Use the largest possible backbending radius for elevators with side guards or hold-down devices.

Standard range of belt widths b_0 , free edge and collapse factor Q ($R_{min} = Q \times b_0$)

Belt width mm (nom.)	250	300	350	400	450	500	550	600	650	700	750	800	850	etc.
Belt width inch (nom.)	10	12	14	16	18	20	22	24	26	28	30	32	34	etc.
Coll. factor Q	1.98	2.12	2.22	2.30	2.36	2.41	2.44	2.48	2.50	2.53	2.55	2.56	2.58	etc.
Free edge mm (nom.)	64/77	64/77	64/77	64/77	64/77	64/77	64/77	64/77	64/77	64/77	64/77	64/77	64/77	etc.
Free edge inch	2.5/3	2.5/3	2.5/3	2.5/3	2.5/3	2.5/3	2.5/3	2.5/3	2.5/3	2.5/3	2.5/3	2.5/3	2.5/3	etc.
Sprocket offset mm	18.8	-6.3	18.8	-6.3	18.8	-6.3	18.8	-6.3	18.8	-6.3	18.8	-6.3	18.8	etc.
Sprocket offset inch	0.7	-0.3	0.7	-0.3	0.7	-0.3	0.7	-0.3	0.7	-0.3	0.7	-0.3	0.7	etc.
Sprockets	4	5	6	7	8	9	10	11	12	13	14	15	16	etc.
Rollers (2 rows)	3	4	5	6	7	8	9	10	11	12	13	14	15	etc.

Real belt widths are in most cases 0.1% to 0.3% smaller.

For POM material up to 750 mm (30") -3 mm to 0 mm and -0.4% to 0% for wider belts.

Standard belt widths in increments of 50 mm (2"). Smallest possible width 250 mm (9.84").

For detailed material properties refer to the HabasitLINK® Engineering Guidelines.

The nominal tensile strength is valid for 23 °C (73 °F). The admissible tensile force depends on the operating temperature near the drive sprockets. Within the temperature range allowed, the admissible tensile force may vary from 100% to 20% of the nominal tensile strength. For detailed information and correct calculation of effective tensile force refer to the Calculation Guide in the HabasitLINK® Engineering Guidelines.

Disclaimer

Product Application Disclaimer (valid for ALL Habasit products and mentioned on all PDS)

This disclaimer is made by and on behalf of Habasit and its affiliated companies, directors, employees, agents and contractors (hereinafter collectively "HABASIT") with respect to the products referred to herein (the "Products"). SAFETY WARNINGS SHOULD BE READ CAREFULLY AND ANY RECOMMENDED SAFETY PRECAUTIONS BE FOLLOWED STRICTLY! Please refer to the Safety Warnings herein, in the Habasit catalogue as well as installation and operating manuals. All indications / information as to the application, use and performance of the Products are recommendations provided with due diligence and care, but no representations or warranties of any kind are made as to their completeness, accuracy or suitability for a particular purpose. The data provided herein are based on laboratory application with small-scale test equipment, running at standard conditions, and do not necessarily match product performance in industrial use. New knowledge and experience may lead to re-assessments and modifications within a short period of time and without prior notice. EXCEPT AS EXPLICITLY WARRANTED BY HABASIT, WHICH WARRANTIES ARE EXCLUSIVE AND IN LIEU OF ALL OTHER WARRANTIES, EXPRESS OR IMPLIED, THE PRODUCTS ARE PROVIDED "AS IS". HABASIT DISCLAIMS ALL OTHER WARRANTIES, EITHER EXPRESS OR IMPLIED, INCLUDING, BUT NOT LIMITED TO, IMPLIED WARRANTIES OF MERCHANTABILITY, FITNESS FOR A PARTICULAR PURPOSE, NON-INFRINGEMENT, OR ARISING FROM A COURSE OF DEALING, USAGE, OR TRADE PRACTICE, ALL OF WHICH ARE HEREBY EXCLUDED TO THE EXTENT ALLOWED BY APPLICABLE LAW. BECAUSE CONDITIONS OF USE IN INDUSTRIAL APPLICATION ARE OUTSIDE OF HABASIT'S CONTROL, HABASIT DOES NOT ASSUME ANY LIABILITY CONCERNING THE SUITABILITY AND PROCESS ABILITY OF THE PRODUCTS, INCLUDING INDICATIONS ON PROCESS RESULTS AND OUTPUT.