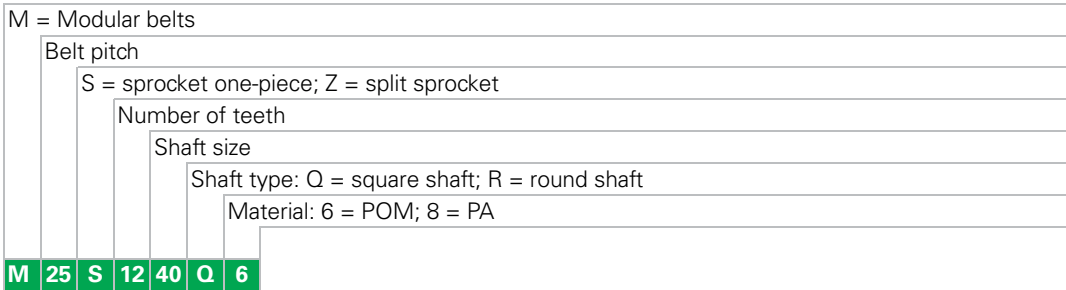


# HabasitLINK®

## Sprocket series M2500-C2 (M2585/86)



### Sprocket availability

Type	Number of teeth	Diam. of pitch $\varnothing d_p$		$A_1$		Hub width $B_L$		Square bore Q		Ø Round bore R		Standard material
		mm	inch	mm	inch	mm	inch	mm	inch	mm	inch	
S-C2	7	59.6	2.4	25.2	0.99	25	0.98		1			PA
S-C2	8	67.7	2.7	29.3	1.15	25	0.98	25		30	1 / 1 <sup>3</sup> / <sub>16</sub>	PA
S-C2	10	83.8	3.3	37.5	1.48	25	0.98	40	1 / 1.5	30	1 / 1 <sup>3</sup> / <sub>16</sub>	PA
S-C2	12	100.0	3.9	45.8	1.80	25	0.98	40	1 / 1.5	30 / 40	1 / 1 <sup>3</sup> / <sub>16</sub>	PA
S-C2	15	124.5	4.9	58.3	2.30	25	0.98	60	2.5			PA
S-C2	16	132.8	5.2	62.5	2.46	25	0.98	40	1.5			PA
S-C2	18	149.1	5.9	70.8	2.79	25	0.98	40 / 60	1.5 / 2.5	30	1 / 1 <sup>3</sup> / <sub>8</sub>	PA
S-C2	20	165.5	6.5	79.2	3.12	25	0.98	40 / 60	1.5 / 2.5	30	1 / 1 <sup>3</sup> / <sub>8</sub>	PA

S-C2: machined sprockets. Other sprocket and hub sizes on request.

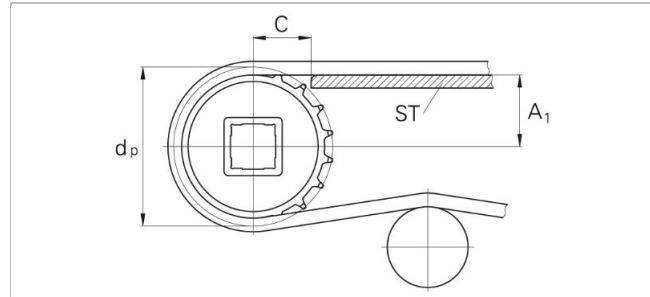
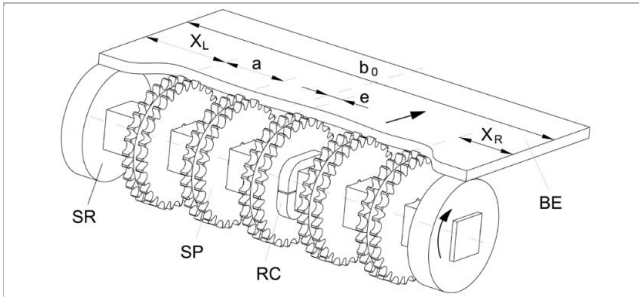
**Key ways** for round bore shape follow European standards for metric sizes and US standards for imperial sizes. For detailed dimensions see table in the Engineering Guide chapter Design Guide.

**Other materials** available on request.



Sprocket one-piece (solid)

### Sprocket arrangement



**BE** Belt  
**RC** Retainer  
**SP** Sprocket  
**b<sub>0</sub>** belt width  
**Wearstrips**

The distance **C** between the sprocket axis and the slider support **ST** is minimal 28 mm (1.1").

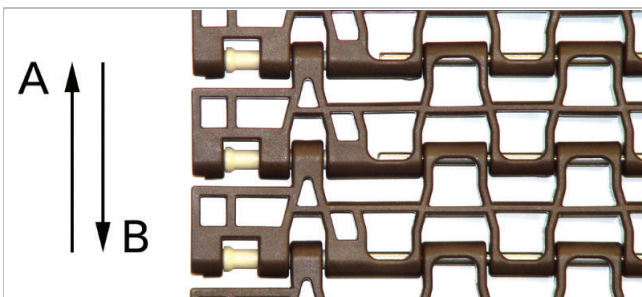
Between driving shaft and idling sprockets or rollers the belt is carried by a slider support furnished with longitudinal wearstrips (ST) from UHMW Polyethylene or other suitable material.

### Sprocket positioning

For correct positioning of the center sprocket divide the belt width by the link increment. The rounded result will be an even or an odd number. These numbers are the criteria for offset or no offset, see table.

Belt type	Sprocket spacing <b>a</b>		Sprocket edge distance (minimal) *		Criteria for center sprocket position	Result of formula (rounded)	Offset <b>e</b>	Remarks
	minimal mm inch	maximal mm inch	X <sub>L</sub>	X <sub>R</sub>				
M2585-P0 M2586	33.8 1.33	101.5 4	42 1.65	42 1.65	b <sub>0</sub> / 33.8 b <sub>0</sub> / 1.33	even number (2, 4, 6 ...) odd number (3, 5, 7 ...)	8.5 0.33	right in running direction A left in running direction B left in running direction A right in running direction B
M2585-S0	33.8 1.33	101.5 4	59 2.32	59 2.32	b <sub>0</sub> / 33.8 b <sub>0</sub> / 1.33	even number (2, 4, 6 ...) odd number (3, 5, 7 ...)	8.5 0.33	right in running direction A left in running direction B left in running direction A right in running direction B

\* X<sub>L</sub> and X<sub>R</sub> are related to the running direction A and inverse for the running direction B.



M2585-S0, left edge X<sub>L</sub> (M2585-P0, M2586 similar)

### Number of sprockets and wearstrips for M2585, M2586

Standard belt width (nominal)		Number of sprockets per shaft min. number	Number of wearstrips	
mm	<i>inch</i>		Carryway (top)	Returnway (bottom)
305	12	2	2	2
508	20	3	3	2
711	28	5	4	2
914	36	7	6	3
1117	44	7	8	3
1319	52	9	10	4
1522	60	11	10	4
1725	68	13	12	7
1928	76	13	12	7
2131	84	15	13	8
2333	92	17	16	8
2536	100	19	18	9

The number of sprockets depends on the belt load and may be different for driving and idling shafts.  
For calculation of correct sprocket number please use LINK-SeleCalc.

#### Disclaimer

##### Product Application Disclaimer (valid for ALL Habasit products and mentioned on all PDS)

This disclaimer is made by and on behalf of Habasit and its affiliated companies, directors, employees, agents and contractors (hereinafter collectively "HABASIT") with respect to the products referred to herein (the "Products"). SAFETY WARNINGS SHOULD BE READ CAREFULLY AND ANY RECOMMENDED SAFETY PRECAUTIONS BE FOLLOWED STRICTLY! Please refer to the Safety Warnings herein, in the Habasit catalogue as well as installation and operating manuals. All indications / information as to the application, use and performance of the Products are recommendations provided with due diligence and care, but no representations or warranties of any kind are made as to their completeness, accuracy or suitability for a particular purpose. The data provided herein are based on laboratory application with small-scale test equipment, running at standard conditions, and do not necessarily match product performance in industrial use. New knowledge and experience may lead to re-assessments and modifications within a short period of time and without prior notice. EXCEPT AS EXPLICITLY WARRANTED BY HABASIT, WHICH WARRANTIES ARE EXCLUSIVE AND IN LIEU OF ALL OTHER WARRANTIES, EXPRESS OR IMPLIED, THE PRODUCTS ARE PROVIDED "AS IS". HABASIT DISCLAIMS ALL OTHER WARRANTIES, EITHER EXPRESS OR IMPLIED, INCLUDING, BUT NOT LIMITED TO, IMPLIED WARRANTIES OF MERCHANTABILITY, FITNESS FOR A PARTICULAR PURPOSE, NON-INFRINGEMENT, OR ARISING FROM A COURSE OF DEALING, USAGE, OR TRADE PRACTICE, ALL OF WHICH ARE HEREBY EXCLUDED TO THE EXTENT ALLOWED BY APPLICABLE LAW. BECAUSE CONDITIONS OF USE IN INDUSTRIAL APPLICATION ARE OUTSIDE OF HABASIT'S CONTROL, HABASIT DOES NOT ASSUME ANY LIABILITY CONCERNING THE SUITABILITY AND PROCESS ABILITY OF THE PRODUCTS, INCLUDING INDICATIONS ON PROCESS RESULTS AND OUTPUT.