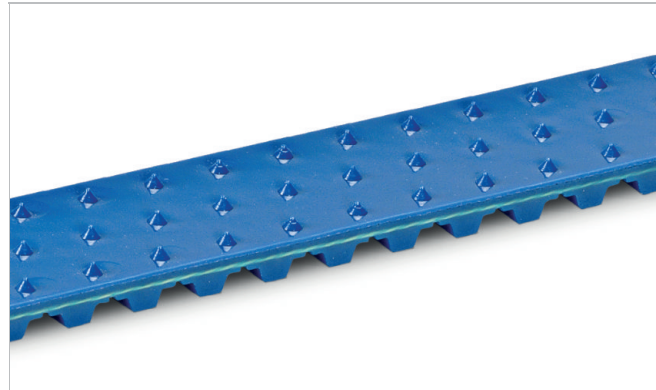
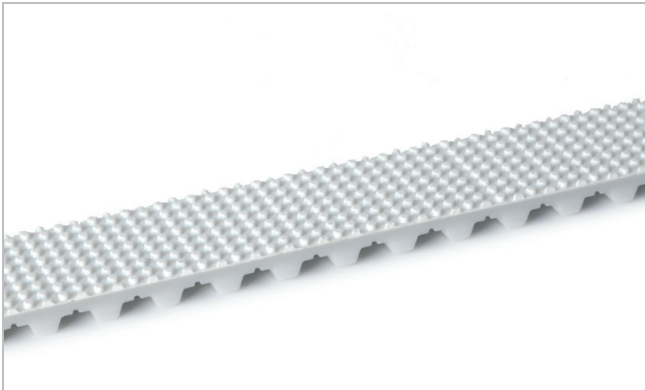


# HabaSYNC® Timing Belts Covers TPU Embossed



## Product Construction / Design

Material	Thermoplastic polyurethane (TPU)
----------	----------------------------------

## Technical data

Min. operating temperature admissible (continuous)	-30 °C	-22 °F
Max. operating temperature admissible (continuous)	80 °C	176 °F

Product code	Thickness		Hardness ShA	Color	Conveying side surface	Conveying side property	Thickness factor	Food grade <sup>1</sup> DoC
	mm	inch						
AC-CD.FB12- N-YC+PN/EH	1.20	0.05	92	Cobalt blue	Inverted pyramid structure	Non-adhesive	30	YC
AC-CD.F16- N-FB+EH/AR	1.6	0.06	85	Black	Medium textile structure	Medium- adhesive	25	-
AC-CD.F16- N-FC+LG/EH	1.6	0.06	85	Cobalt blue	Longitudinal groove structure	Adhesive	30	FC
AC-CD.F16- N-FC+TS/EH	1.6	0.06	85	Cobalt blue	Sawtooth profile structure	Adhesive	25	FC
AC-CD.F16- N-FW+OP/EH	1.6	0.06	85	White	Pimple structure	Medium- adhesive	30	FW
AC-CD.F16- N-FW+TS/EH	1.6	0.06	85	White	Sawtooth profile structure	Adhesive	25	FW
AC-CD.F20- N-AC+PP/AR	2.0	0.08	70	Cobalt blue	Diagonal rhomboid positive structure	Adhesive	20	AC
AC-CD.F20- N-FT+S/EH	2.0	0.08	85	Transparent	Matt	Medium- adhesive	20	FT
AC-CD.F22- N-FC+HT/AR	2.2	0.09	85	Cobalt blue	Cone top structure	Non-adhesive	25	FC
AC-E-FB25- WB-C100+E(S/LG)	2.0	0.08	65	Black	Longitudinal groove structure	Super-adhesive	30	-
AC-PQF-140/2.6LT72	2.6	0.10	72	Transparent	Longitudinal groove structure	Adhesive	30	-
AC-PUGRIP-C-3MM	3.8	0.15	92	Blue	Grip structure	Super-adhesive	20	PU Supergrip Blue
AC-XB85TS	1.20	0.05	90	Black	Fine textile structure	Medium- adhesive	30	-

<sup>(1)</sup> This product is in compliance with relevant EU and/or US food contact requirements. Check the following link for detailed information [Documents of Compliance](#)

# HabaSYNC® Timing Belts Covers TPU Embossed



---

*Hardness* and *Thickness* are statistical values which may vary slightly in between different production lots.

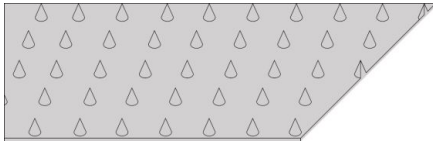
Recommended minimum pulley diameter is the result of multiplying the cover *Thickness* by the *Thickness factor*. For design purposes, always use the larger suggested diameter of the belt and cover selected.

Limited representative testing based on a standard configuration is carried out to estimate minimum pulley diameters. Please contact Habasit for specific guidance regarding non-standard applications, including, but not exclusively, when profiles or cleats are used.

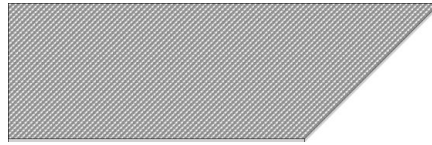
All covers may not be available in your local market. Please consult your local Habasit representative.

*All data are approximate values under standard climatic conditions: 23°C/73°F, 50% relative humidity (DIN 50005/ISO 554).*

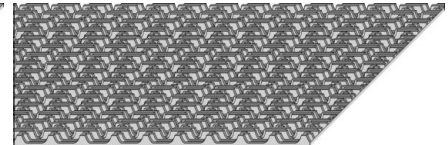
## Conveying side surface



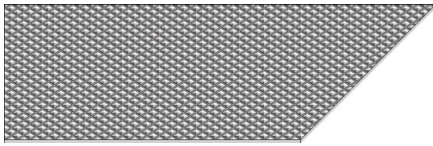
Cone top structure



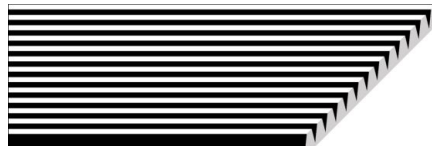
Fine textile structure



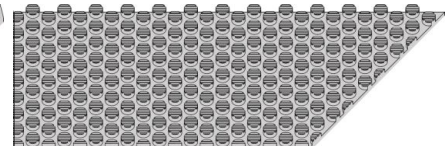
Grip structure



Inverted pyramid structure



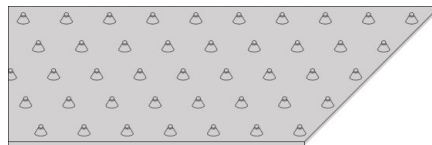
Longitudinal groove structure



Pimple structure



Sawtooth profile structure



Spike structure

## Chemical resistance

Link to 'Chemical resistance information': <https://rims.habasit.com>

Group  
Sub-Group

HabaSYNC® Timing Belts Covers  
Polyurethane Covers

## Disclaimer

### Product Application Disclaimer (valid for ALL Habasit products and mentioned on all PDS)

This disclaimer is made by and on behalf of Habasit and its affiliated companies, directors, employees, agents and contractors (hereinafter collectively "HABASIT") with respect to the products referred to herein (the "Products"). SAFETY WARNINGS SHOULD BE READ CAREFULLY AND ANY RECOMMENDED SAFETY PRECAUTIONS BE FOLLOWED STRICTLY! Please refer to the Safety Warnings herein, in the Habasit catalogue as well as installation and operating manuals. All indications / information as to the application, use and performance of the Products are recommendations provided with due diligence and care, but no representations or warranties of any kind are made as to their completeness, accuracy or suitability for a particular purpose. The data provided herein are based on laboratory application with small-scale test equipment, running at standard conditions, and do not necessarily match product performance in industrial use. New knowledge and experience may lead to re-assessments and modifications within a short period of time and without prior notice. EXCEPT AS EXPLICITLY WARRANTED BY HABASIT, WHICH WARRANTIES ARE EXCLUSIVE AND IN LIEU OF ALL OTHER WARRANTIES, EXPRESS OR IMPLIED, THE PRODUCTS ARE PROVIDED "AS IS". HABASIT DISCLAIMS ALL OTHER WARRANTIES, EITHER EXPRESS OR IMPLIED, INCLUDING, BUT NOT LIMITED TO, IMPLIED WARRANTIES OF MERCHANTABILITY, FITNESS FOR A PARTICULAR PURPOSE, NON-INFRINGEMENT, OR ARISING FROM A COURSE OF DEALING, USAGE, OR TRADE PRACTICE, ALL OF WHICH ARE HEREBY EXCLUDED TO THE EXTENT ALLOWED BY APPLICABLE LAW. BECAUSE CONDITIONS OF USE IN INDUSTRIAL APPLICATION ARE OUTSIDE OF HABASIT'S CONTROL, HABASIT DOES NOT ASSUME ANY LIABILITY CONCERNING THE SUITABILITY AND PROCESS ABILITY OF THE PRODUCTS, INCLUDING INDICATIONS ON PROCESS RESULTS AND OUTPUT.